



PBX23

Where Construction & Design
Professionals Gather for Education,
Product Knowledge, and Networking



PROGRAM GUIDE



SEPTEMBER 27, 2023
HAWAII CONVENTION CENTER



SERVING
ARCHITECTS
FACILITY OWNERS
GENERAL CONTRACTORS

WE HAVE OPENED OUR DOORS TO SO MUCH MORE!

**Learn more about our extended
product lines and services**

www.ipdhawaii.com



Electronic Access Control Specialists

IPD provides full-service solutions for your Access Control needs. From consultation & design, sales & installation, to maintenance & support, we're here to assist.



IPD furnishes and installs a full range of:

- Elevator Smoke Containment
- Expansion Joint Control Systems
- Hollow Metal, FRP, and Sound Transmission Control Doors and Frames
- Coiling Doors and Grilles
- Commercial Sectional Doors
- Hardware
- Toilet Partitions and Accessories
- Electronic Access Control

ASSA ABLOY

Clopay®

SARGENT

CORNELL
Innovative door solutions



Locally Owned And Operated Since 1978

Our Honolulu facilities include a warehouse, lock shop, and certified weld shop.
Hawaii's Only Certified Architectural Hardware Consultant (AHC)

500 Alakawa St. #114 Honolulu, HI 96817

(808) 955-1126

CONSTRUCTION MANAGERS

ADVOCATING FOR YOU

At Bergeman Group, we apply experience-based *Construction Intelligence*SM to all the services we offer, delivering sustainable and responsible solutions to our clients. By engaging our team on critical projects, our clients benefit from our knowledge and advocacy, positioning them for a successful project completed on-time, within budget, and with reduced risk.

Concrete & Structural Repairs

Pipe Repair & Replacement

Roofing & Waterproofing

Window Replacement

Deferred Maintenance

Railings / Balconies / Lanais

Property Condition Assessment

Interior Renovations

Exterior Facades & Painting

HVAC & Energy Efficiency

New Construction

Dispute Resolution



bergemangroup.com

812 Ilaniwai Street

Honolulu, HI 96813

info@bergemangroup.com

808.465.3555

MANAGING CONSTRUCTION | Building Peace of MindSM

WELCOME TO PBX23

ALOHA!

CSI Honolulu looks forward to welcoming the Architecture, Engineering, Construction and Owners (AECO) community to the Hawai'i Convention Center on September 27 for PBX23, where Hawai'i's construction and design professionals gather each year for education, product knowledge and networking.

As in previous years, PBX23 promises to be an exceptional day, offering 16 insightful and timely seminars with local and mainland experts; a product and services showcase of 200+ exhibitor booths; and opportunities to mingle and network with industry peers. They include our popular Pau Hana event and the 2nd Annual PBX Jeopardy competition between industry associations.

A wallet-friendly, all-inclusive registration fee gives you access to all that PBX23 has to offer! Details can be found in the following pages.

As we aspire to fulfill CSI Honolulu's vision for an annual, all-inclusive expo that reaches across all AECO sectors we are grateful once again for our partnership with AIA Honolulu, BIA Hawaii and GCA of Hawaii, all of whom played an active role in developing outstanding programs and promoting PBX23 to their members.

We also appreciate the contributions of our dedicated committee volunteers and consultants and the enthusiasm and support of our exhibitors, sponsors, seminar presenters, and many industry partners who helped make PBX23 a success.

Thank you for joining us. Enjoy the show!



John Fullmer,
AIA, CSI
PBX23 Co-Chair

Richard Myers,
AIA, CSI
PBX23 Co-Chair

Tim Waite,
PE, CSI, CDT
PBX23 Co-Chair

THE PBX23 ADMISSION FEE INCLUDES:

- Validated parking at Hawai'i Convention Center (\$15 value)*
- 200+ vendor booths
- Access to 16 expert-led seminars with AIA LU and HSW credits
- Voucher for Lunch Concession/1801 Café (\$10 value)
- AIA Honolulu 2023 Annual Business Meeting
- Hosted Pau Hana Celebration with great prizes and pupu

* Parking included on 'space available' basis and is not guaranteed. No refunds.

PBX23 PLANNING COMMITTEE

Co-Chairs

John Fullmer, AIA, CSI
Rick Myers, AIA, CSI
Tim Waite, PE, CSI, CDT

Administration/Treasurer

Corinna Bailey, CSI, CCPR

Exhibitors and Sponsors

Barbie Rosario

Seminars

Reid Mizue, AIA, (Chair)
Julia Fink, AIA Honolulu
John Fullmer, AIA, CSI
David Kaahaaina, AIA, CSI
Jess Leorna, BIA Hawaii
Rick Myers, AIA, CSI
Cathi Schar, FAIA
Gail Suzuki-Jones, Assoc. AIA
Tim Waite, PE, CSI, CDT
Cheryl Walthall, GCA of Hawaii
Leighton Wong, PE

Website/Graphic Design

Manageability LLC:
Joanne Corpuz
Mark Tawara, FSMPS, CPSM, Hon.
AIA Honolulu

Public Relations/Marketing

Mele Pochereva

Pau Hana Celebration/Prizes

Greg Endo

Volunteer Coordinator

Elena Brown, AIA, D.Arch., CDT

PBX Program Guide

Trade Media Hui

Special thanks to the student volunteers from the following clubs:

American Institute of Architecture
Students (AIAS) Hawaii Chapter, UH Manoa
American Society of Civil Engineers
(ASCE) Student Chapter, UH Manoa
Architectural, Engineering, and CAD
Technologies (AEC) Club, Honolulu
Community College
IDPRO, Chaminade University

STEGO®

INDUSTRY-LEADING BARRIERS AND UNRIVALED SUPPORT™



TERMITE AND VAPOR BARRIER

A Physical Barrier Against Subterranean Termites and Moisture Vapor.



Pango® Wrap



VAPOR INTRUSION BARRIER

Designed to Serve as a Barrier to Volatile Organic Compounds (VOCs).



Drago® Wrap



Stego Installation Support

Stego Installation Support is a no-cost service designed to help achieve an effective installation and add value for project teams.



The Stego Life of The Building™ Warranty

As the construction industry leader in below-slab barrier materials, Stego offers the **first-of-its-kind warranty** for its line of vapor barriers and retarders. Warranty information available online at: www.stegoindustries.com/legal

Please contact our Hawai'i Regional Manager for information regarding pricing, samples or where to purchase **PANGO** and **DRAGO** products.

Mike McCarthy | 949.412.3444 | mikemccarthy@stegoindustries.com

All designated trademarks are the intellectual property of Stego Industries, LLC. Installation, Warranty, and State Approval Information: stegoindustries.com/legal. ©2023 Stego Industries, LLC. All rights reserved.



MAHALO TO OUR SPONSORS & PARTNERS

SHOW BAG SPONSORS



ASSA ABLOY
Opening Solutions

SEMINAR KIOSK SPONSOR



PAU HANA RECEPTION SPONSOR



MEA 'ONO DESSERT SPONSORS



ALOHA SPONSORS



MAHALO SPONSORS

ALANA BUICK & BERS

J&B MATERIALS, INC.

MASON

PROTECTO
WRAP

ALPHAPRO
TECH

MANAGEABILITY
LLC

PACIFIC POWERLIFT DOORS
AND HYDAWAY WALLS

REGUPOL

INDUSTRY SPONSORS



INDUSTRY PARTNERS

AMERICAN COUNCIL OF ENGINEERING
COMPANIES (ACEC HAWAII)

CONTRACTORS ASSOCIATION
OF KAUAI (CAK)

STRUCTURAL ENGINEERS ASSOCIATION
OF HAWAII (SEAOH)

AMERICAN SOCIETY OF CIVIL
ENGINEERS – HAWAII SECTION (ASCE)

HAWAII ISLAND CONTRACTORS'
ASSOCIATION (HICA)

SOCIETY OF MILITARY ENGINEERS
(SAME – HONOLULU POST)

AMERICAN SOCIETY OF INTERIOR
DESIGNERS (ASID HAWAII)

HAWAII SOCIETY FOR HEALTHCARE
ENGINEERING (HISHE)

URBAN LAND INSTITUTE
(ULI HAWAII)

EXHIBITOR LIST (as of August 9, 2023)

Our sponsors are highlighted in **yellow** or **pink** (Dessert Sponsors).

A

ABT, Inc. / SportsEdge..... D46p
 AED Institute.....B14p
 AIA Honolulu.....
 AL-13 Exterior Cladding..... F24p
 All Weather Architectural
 Aluminum E26d, E28p
 Allana Buick & Bers, Inc.....B11p
 Aloha Marketing/
 Build Pono C14p, D13p
 Alpha ProTech
 Engineered Products..... A32p
 Arcadia, Inc.C38, C40d
 Architectural Woods/
 States IndustriesE18p
 Atlas Sales Co. Inc. C52p
 The Audio Visual Company.....A20,
 A22p, B19p, B21p

B

Bacon Universal A26p, A28p,
 B25p, B27p
 Belkin Tech.....B26p
 Bello's Millwork Inc.....C27
 Benjamin MooreC39
 Best Flooring Honolulu.....C30
 Breezway North America.....E32p

C

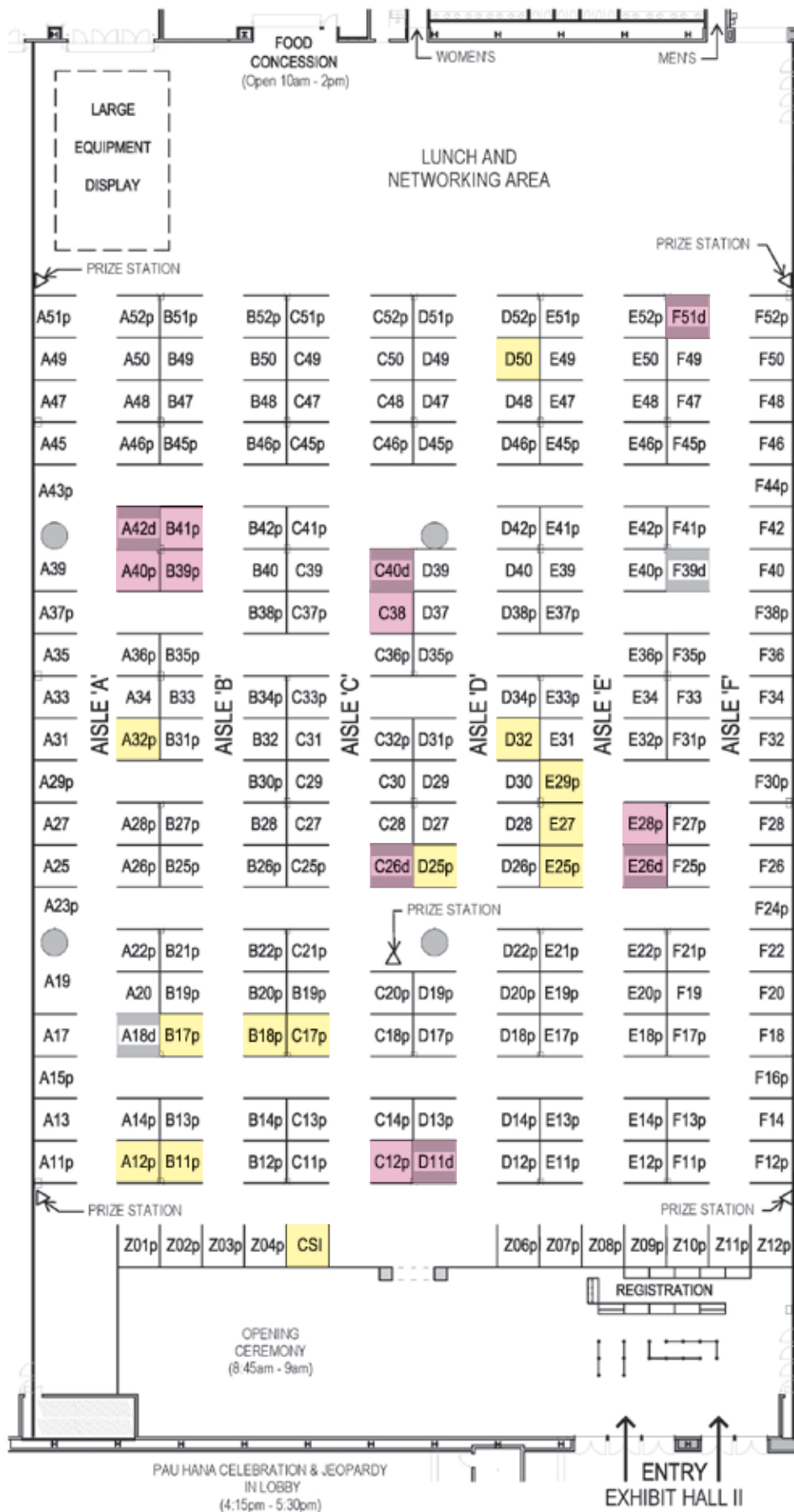
CCPI Hawaii E48, E49, E50,
 E51p, E52p
 CEMCO..... F28
 Cherry Creek Door
 and Window F40
 ClarkDietrich D18p
 Concrete Canvas.....C28
 CSI Honolulu.....CSI

D

Daltile F21p
 Diode LED / Lucetta C37p

E

EcoShade Inc. E34, E36p



Hawaii Lighting Representatives

Lighting, Controls, Building Management Solutions



808.445.6466

VISIT AND WIN

1 of 5 \$100 Giveaways

Grab a Travel Game Card At Booth C36P

Visit each Lighting Exhibitor to
Receive a Travel Stamp to Enter!
Further instructions will be on your game card
1 Entry Per person



[M] M^PLIGHTING®



MAGNITUDE
LIGHTING

FOLIO



DL diodeled

we-ef

CRESTRON

LUCETTA

www.hawaiilighting.com

info@hawaiilighting.com

EXHIBITOR LIST (as of August 9, 2023)

Engineering Partners Inc. F41p
ENPRO Environmental F11p
Evergreen by Debra.....F17p, F19

F

FBM / Armstrong Ceilings..... F26
Ferguson ... A40p, A42d, B39p, B41p
First OnSite D27
Focus Industries Inc. F50
FOLIO USA Inc..... C32p
Foundation
Support of HI..... E14p, F13p

G

Geotech Solutions Inc. C26d
GPRM Prestress.....E46p
Guardian Glass.....A17

H

Hardwoods Specialty
Products..... E27, E29p

Hawaii Architectural Sales..... C19p
Hawaii Lighting Reps C36p, D35p
Hewn Elements..... F51d
HISHE (Hawaii Society for
Healthcare Engineering)Z08p
Hollabaugh Brothers & Assoc. ... D37
HonblueB18p, C17p
Honsador Lumber..... D45p, D47,
D49, D51p
Hope's WindowsE17p
HPM Building SupplyA23p, A25,
A27, A29p, A31

I

Inpro CorporationC47
ISEC Inc.B38p
Island Cooling LLC.....A19
Island Pacific
Distributors C12p, D11d

J

James Hardie Building
Products..... D26p
Jeff Brink Inc..... D28
Jensen Precast E47
JM Sales Hawaii LLC..... B49

K

Kingspan Insulated Panels.....B30p
Kloeckner Metals C41p
Koroseal Interior Products F32

L

Laticrete F20
Lynden Door Inc. /
Alliance Door Products.....A13

M

Magnitude Lighting D30
Malarkey Roofing Products.....C50
Mapei F22
Masonry Institute of Hawaii F18
Mekala Powdercoat
& Patio Mfg..... D32

Miller EnterprisesB52p
Modern Mill A14p
MP Lighting..... D34p
MRC Roofing LLC D22p

N

Nana Wall Systems Inc..... D25p
No. 8 Lighting C33p
NorthcladE12p

O

O'Hagin..... D29
OK Hardware &
Construction Supply.....C49, C51p
Orepac E20p, E22p

P

PABCO GypsumB51p
Pacific American Lumber A11p
Pacific Home and
Appliance Distribution C25p
Pacific Powerlift Doors
and Hydaway WallsB17p

Hawaii's Leading Distributor of Premium Residential Appliances



DISTRIBUTOR FOR:
THE GE APPLIANCE FAMILY
INCLUDING MONOGRAM & CAFÉ
FISHER & PAYKEL • BROAN
DCS • BEST • ASKO • COYOTE
ZIP WATER • FRANKE

AUTHORIZED DEALER FOR:
BOSCH • THERMADOR



Visit our showroom today or visit us online.

(808) 564-2493

M-F: 8am-4pm
SAT: 10am-3pm

99-1305 Koaha Pl.
Aiea, HI 96701



PACIFIC
HOME and APPLIANCE
DISTRIBUTION

www.pacifichomeandappliance.com

Your Local Geosynthetic Solutions Provider

Serving Hawaii Since 1995



**GEOTECH
SOLUTIONS, INC.**
GEOSYNTHETICS & EROSION CONTROL



Geotech Solutions, Inc.
2118 Lauwiliwili st. #102-e
Kapolei, HI 96707
(808) 677-1580

www.geotechsolutions.com

EXHIBITOR LIST (as of August 9, 2023)

Painter's Warehouse Inc. C21p
 Perfect Power Systems D31p
 Peterson Sign Company B48
 Philips Professional Displays E41p
 Polycoat Products C13p
 Polyglass USA B31p
 Polyguard Products - TERM Barrier
 Division D39
 PPG Paints D42p
 Protecto Wrap A12p

R

Raynor Hawaii
 Overhead Doors D38p
 Reflections Glass B47
 Regupol E25p
 Rinell Wood Systems Inc. B42p
 RMA Sales E21p
 Roppe Corp. D12p
 Rulon International D48

S

Serge Ferarri F35p
 Sierra Pacific Windows F25p
 Sika Corporation B13p
 Sika Facades A33
 Simpson Strong-Tie D50
 Statewide General Contracting &
 Construction Inc. C18p, C20p,
 D17p, D19p
 Stego Industries D52p
 Sto Corp. E45p
 Strategic Building Products C46p,
 C48
 Structural Systems Inc. B12p, C11p
 Stryker Z06p
 T
 T&T Tinting Specialists Inc. F14
 Termimesh Hawaii D40
 TOTO, Tarkett, Contech E42p

Tri-West Ltd. C29
 Tropical J's F31p, F33

U

Unistrut Hawaii B46p
 US CAD E11p

V



VELUX Commercial A45

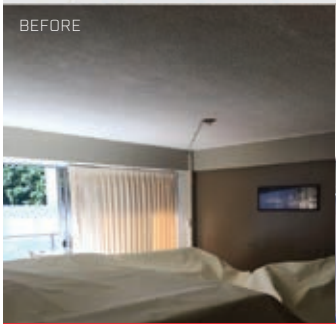

W

Waltz Engineering Inc. F27p
 Watson Bowman Acme D14p
 Western Window
 Systems B20P, B22P
 Williams Pacific Inc. C45p
 Windward Equipment
 Rentals E37p, E39

Z

Zurier A39

BOOTHS C-18, C-20, D17 & D19

STATEWIDE GC & CONSTRUCTION IS THE EXCLUSIVE CONTRACTOR FOR **NUWALLS HAWAII**. A STRETCH FABRIC SOLUTION TO IMPROVE YOUR ROOM'S APPEARANCE AND ACOUSTICS.

NUWALLS HAWAII IS A SOLUTION TO UNSIGHTLY AND ASBESTOS-CONTAINING POPCORN TEXTURED CEILINGS. HAVE A SMOOTH LOOKING CEILING THAT IS CLEANABLE. COMES IN MANY COLORS AND YOU CAN PRINT OR PAINT IT. 10-YEAR WARRANTY

STATEWIDEHAWAII.COM
 808-689-4115 INFO@SGCCHAWAII.COM



Hawaii's **Safest** and **Strongest** Louver Window

IS YOUR HOME
Safe and Secure?



Tempered Glass

The pin secures the blade to the clip from inside.

Don't try this at home!

STRONGHOLDTM
 by breezway

Please visit www.breezway.com or call 484 5999



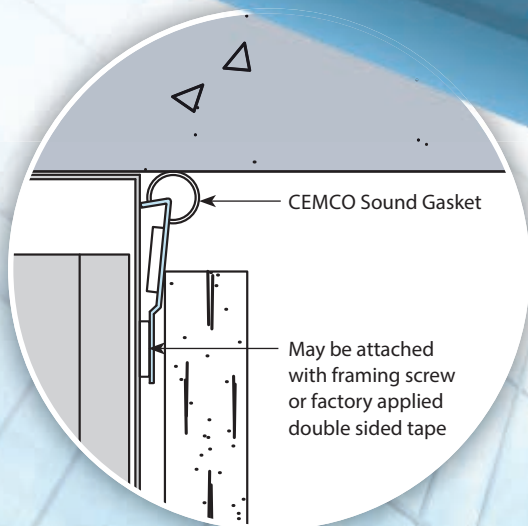
Sound Gasket[®]

SOUND ABATEMENT FOR BUILDING JOINTS



Learn About the Advantages of Using Sound Gasket[™] on Your Next Project

- >> **SOUND GASKET** is mechanically or adhesively fastened to the leg of the track. It features a 3/8" hollow bubble gasket on the upper corner that is easily compressed to seal against uneven concrete or fluted decks. Once properly installed the Sound Gasket provides an unbreakable seal, to provide long-term smoke and sound protection.
- >> **SOUND GASKET** provides premium STC ratings: STC 51 on 3-5/8" 20 EQ studs unbalanced walls; STC 55 on 3-5/8" 20 EQ studs balanced walls; STC 68 on 20 EQ double-wall balanced.
- >> **SOUND GASKET** takes the place of acoustic sealant at building joints.
- >> **SOUND GASKET** can be used on head-of-wall, bottom-of-wall, and wall to wall building joints.
- >> **SOUND GASKET** is very durable and is not easily damaged, once installed it will not delaminate, it will not take in water, and it will not shrink or harden over time.
- >> U.S. Patent No. 10,246,871; 10,753,084; 10,954,670
- >> **For more information, contact your local CEMCO sales professional today!**



Scan the code above to view the installation video!



Expanding Your Solutions

www.cemcosteel.com | 800.775.2362

SEMINAR & EVENTS SCHEDULE

PBX23 brings the construction and design industries together

Access to these seminars and special events

EXPERT-LED SEMINARS			
TRACK	'EKAHI — 1	'ELUA — 2	'EKOLU — 3
TIME	Design & Practice	Sustainability, Planning & Construction	Contracting
7:00 AM	PBX23 REGISTRATION OPENS		
7:45 AM	Session 1A: WORKING WITH NAVFAC HAWAII AND CORPS OF ENGINEERS, HONOLULU DISTRICT Presented by AIA Honolulu	Session 2A: STRAIGHT TALK ON THE NEW DPP: AN EVOLVING CITY DEPARTMENT Presented by AIA Honolulu	Session 3A: CYBERSECURITY: BASICS FOR DESIGN & CONSTRUCTION BUSINESS Presented by BIA Hawaii
8:45 AM	Welcome Remarks, Ho'okipa Opening Ceremony (Exhibit Hall Lobby) EXHIBIT HALL OPENS		
11:00 AM	Session 1B: PROBABILISTIC TSUNAMI DESIGN ZONE MAPS FOR HAWAII Presented by AIA Honolulu	Session 2B: CARBON, THE INFLATION REDUCTION ACT AND THE CASE FOR BUILDING RETROFITS Presented by AIA Honolulu	Session 3B: PEARL HARBOR DRYDOCK 5: A MISSION-CRITICAL FACILITY FOR THE NAVY Presented by GCA OF Hawaii
2:00 PM	Session 1C: SUSTAINABLE EVOLUTION OF HOUSING FOR HAWAII Presented by AIA Honolulu	Session 2C: INSIGHTS INTO HONOLULU'S RAIL TRANSIT PROJECT Presented by AIA Honolulu	Session 3C: WHY BUILDERS AND HOMEOWNERS SHOULD CHOOSE 3D BLUEPRINTS Presented by BIA Hawaii
3:15 PM	Session 1D: THE 'ŌLELO HAWAII CAMPUS: WINNER OF A 2023 AIA HONOLULU AWARD OF EXCELLENCE Presented by AIA Honolulu	Session 2D: U.H. SCHOOL OF ARCHITECTURE: DESIGN FOR SEA LEVEL RISE Presented by AIA Honolulu	Session 3D: PARTNERING FOR REVITALIZATION Presented by GCA OF Hawaii
4:15 PM	PAU HANA CELEBRATION, PRIZE GIVEAWAYS (GRAND LOBBY) (Enter the prize drawings by visiting the special kiosks in the Exhibit Hall through the end of the day)		
4:30 PM	EXHIBIT HALL CLOSES		

together to build knowledge and improve project delivery.
 Events is included in the admission fee.

Sessions subject to change

'EHĀ — 4

New Products & Trends

Session 4A:

HIGH-PERFORMANCE FIRESTOP
 Sponsored by CEMCO

Session 4B:

**POWER OF ASSOCIATION:
 MEET BIA HAWAII AND NAHB**
 Sponsored by BIA Hawaii

Session 4C:

**SELECTING THE IDEAL
 PRE-GLAZED FENESTRATION
 SYSTEM FOR YOUR PROJECT**
 Sponsored by
 Hawaii Architectural Sales

Session 4D:

**THE ALUMINUM ADVANTAGE IN
 HIGH PERFORMANCE
 WINDOW & DOORS**
 Sponsored by All Weather
 Architectural Aluminum

PBX23

DON'T MISS THESE SPECIAL EVENTS

CSI HOSPITALITY BOOTH

CSI Honolulu invites members and prospective members to stop by the CSI booth (at the entrance to the Exhibit Hall) for information.

9:30 AM - 10:30 AM

**AIA HONOLULU 2023 ANNUAL
 BUSINESS MEETING**
 LOCATION TBA

Members of the American Institute of Architects (AIA) are invited to attend the 2023 Annual Business Meeting to elect directors for the Honolulu Chapter and Hawaii State Council and inform members of the status of the association.

10:00 AM - 2:00 PM

**LUNCH CONCESSION
 EXHIBIT HALL**

Your PBX23 registration includes a \$10 lunch voucher to use at the Lunch Concession or the Convention Center's 1801 Café.

2:00 PM - 3:00 PM

**MEA 'ONO! POP-UP
 DESSERT STATIONS**

Stop by our Dessert Sponsor booths for assorted sweets and a mid-afternoon energy boost!

4:15 PM - 5:30 PM

**PAU HANA CELEBRATION!
 PRIZE GIVEAWAYS &
 JEOPARDY CHALLENGE**
 GRAND LOBBY

Unwind at the end of the day with hosted refreshments, pupu, live music, and prize drawings as you cheer on your favorite industry team in the 2nd Annual PBX Jeopardy competition – a daring test of knowledge and nerves between industry associations.

LEARN & EARN

15 Sessions | 4 Tracks | AIA LU and HSW CREDITS

Level up your knowledge at PBX23 where local and national experts share their experience and expertise on topics that include sustainability and design case studies; updates from the City's DPP and HART; construction and contracting trends; cybersecurity and risk management; NAVFAC and

Corps of Engineers construction opportunities; product advancements and technology.

Most sessions earn 1 AIA LU; many also qualify for HSW credit. Admission badge is required for entry to seminars. Topics and speakers are subject to change.

'EKAHI (TRACK 1) - DESIGN AND PRACTICE

Session 1A

Working with NAVFAC Hawai'i and U.S. Army Corps of Engineers, Honolulu District
Presented by AIA Honolulu

Presenters will provide an overview of the mission, organization, capabilities and programs of their respective organizations and also will cover potential upcoming design, construction and engineering opportunities for the AEC industry.

PRESENTERS:

CAPT Cameron J. Geertsema, CEC, USN

Commanding Officer, NAVFAC Engineering Systems Command Hawaii Design and Construction Program

Captain

Geertsema earned a BS in civil engineering from Texas A&M and was commissioned through the Officer Candidate School. He also holds an MS in civil engineering from the University of Texas and an MA from the Marine Corps University.



LTC Ryan Pevey

District Commander, USACE Honolulu District

Lt. Col.

Christopher (Ryan) Pevey became the 73rd Honolulu District

Commander June 24, 2022. Prior to joining Honolulu District, he most recently served as the 25th Infantry Division and U.S. Army Hawai'i Engineer.

Jon Yoshinaga, PE, PMP, CCM, LEED AP

Chief of Engineering and Construction, USACE Honolulu District

Jon Yoshinaga has oversight of all engineering and construction resources and programs at the Honolulu District, an organization of approximately 200 engineers, architects and technical professionals that execute an approximately \$1 billion program to provide critical facilities and infrastructure to our Warfighters and the civilian community in the Pacific.



Session 1B

Probabilistic Tsunami Design Zone Maps for Hawai'i
Presented by AIA Honolulu

This seminar provides an in-depth explanation of Dr. Ian Robertson's recent research focused on tsunami loading on coastal structures, and the structural design required to resist those loads. Historical tsunami data from all over the world, through decades of information and real-time mapping of earthquake, plate shifting/sliding phenomena that cause tsunami, will be presented in live-action simulations of the effect on the Hawaiian Islands.



**PRESENTER:
Ian Robertson, Ph.D.**

Professor and Chair of Civil & Environmental Engineering, University of Hawai'i at Mānoa

Ian Robertson, Ph.D., recognized nationally for his contributions to tsunami design, is also a leader in Hawai'i's engineering community for his expertise in hazard mitigation and structural engineering solutions. In his more than 30 years at UH Mānoa, Robertson has received

seven teaching awards; advised more than 85 graduate students; published numerous chapters, journal articles and conference proceedings; and served on the Hawai'i State Earthquake and Tsunami Advisory Committee and the Hawai'i Wind Impacts Advisory Committee.

Session 1C

Sustainable Evolution of Housing for Hawai'i

Presented by AIA Honolulu

This seminar showcases different aspects of Hawai'i's housing typologies. Two prominent Hawai'i firms will discuss aspects of multi-family housing design aesthetics. Understanding the vast differences and similarities between the intersection of elegance and environmental stewardship of WRNS Studio's reimagined concept of luxury living with a focus on sustainable practice, and Polyline Architecture's focus on urbanism, affordable housing, and sustainable wellness-oriented works, will be a unique juxtaposition. Moderator Sterling Higa will spark a conversation about firm focuses, the appetite for both housing and community sustainability, and wonderful aspects of design efforts in a time of housing crisis.

PANELISTS:

Jason DeMarco, AIA, LEED AP BD+C, NCARB

Partner & Director of Sustainability, Polyline Architecture + Urbanism

Polyline's practice focuses on sustainable wellness-oriented projects at the convergence of architecture, urbanism and landscape. Jason's experience in the AEC industry spans over 20 years working in architecture, civil and mechanical engineering, industrial design and facilities management. His



professional and volunteer efforts were recognized with a '40 Under 40' award in 2019.



Adam Woltag, AIA, LEED AP

Partner, WRNS Studio

Adam approaches each design challenge by searching for a balance between the poetic

and the pragmatic — beauty meets budget, program and site. The places he crafts respond to the natural environment and function sustainably, with a lasting elegance that does more with less. His work has been recognized with numerous publications and awards, including two AIA Committee on the Environment (COTE).

MODERATOR:

Sterling Higa

Executive Director, Housing Hawai'i's Future

Sterling Higa is a nonprofit leader, teacher and writer.

He serves as executive director of Housing Hawai'i's Future, a nonprofit creating opportunities for Hawai'i's next generation by ending the workforce housing shortage. He lives with his wife and four children in Ha'ikū, on Maui. Fun Fact: Sterling loves to bodyboard and boulder!



Session 1D

The 'Ōlelo Hawai'i Campus: Winner of a 2023 AIA Honolulu Award of Excellence Presented by AIA Honolulu

The Hawaiian Renaissance of the 1970s sparked the re-establishment of indigenous culture and language-based learning. Since then, a group of community leaders and educators have been working together

to develop a complete educational system spanning preschool to PhD programs taught entirely in 'ōlelo Hawai'i. The group has grown into a statewide coalition of schools and nonprofit organizations. Their success has seen Hawai'i become an aspirational model for similar indigenous language programs across the nation and around the world. This project is the culmination of four decades of effort in envisioning, designing and building a campus-within-a-campus on the grounds of the University of Hawai'i at Hilo.

PRESENTERS:

Karla Sierralta, AIA

*Associate Professor, University of Hawai'i at Mānoa School of Architecture
Principal Investigator, University of Hawai'i Community Design Center*



Brian Strawn, AIA

*Principal Investigator, University of Hawai'i Community Design Center
Lecturer, School of Architecture*

Karla Sierralta is a Venezuelan-American architect, educator and design advocate. As an associate professor at UH-Mānoa's School of Architecture, she teaches design studios and serves as the director of Undergraduate Studies.

Brian Strawn grew up on his family's farm in Illinois. He earned a Master of Design from IIT's Institute of Design, founded as the New Bauhaus, with a focus on design strategy and user research. At UH-Mānoa he teaches research-focused design studios and seminars at the School of Architecture. Karla and Brian co-lead Strawn Sierralta,

SEMINAR GUIDE

an award-winning architecture and design practice they founded in 2003. They also serve as Principal Investigators at the University of Hawai'i at Mānoa through the UH Community Design Center where they initiate, manage and lead funded research on public interest design projects for state agencies and nonprofits.

'ELUA (TRACK 2) - SUSTAINABILITY, PLANNING & CONSTRUCTION

Session 2A

Straight Talk on the New DPP: An Evolving City Department Presented by AIA Honolulu

Jiro Sumada, Department of
Planning & Permitting deputy

director, will share the latest building permit process improvements being implemented at DPP. He will discuss challenges the department is facing and the status of changes and investments being made to DPP's people, processes and technology geared to reduce the permitting backlog and to get permits issued faster. Mr. Sumada will briefly discuss how the "New DPP" is striving to better listen to and collaborate with industry stakeholders and how accountability is changing within the department in regard to anti-corruption measures.

PRESENTER:

Jiro Sumada

*Deputy Director, Department of
Planning & Permitting, City and County
of Honolulu*

Prior to his current position at DPP,

Jiro Sumada served

as deputy director for Hawai'i's Department of Transportation Highways and Airports divisions.

He also served as deputy director for Hawai'i County's Department of Public Works. Mr. Sumada has worked in the private sector with various local engineering companies as a project manager, community outreach specialist and leadership trainer. He also served nine years in the U.S. Air Force working in the facility maintenance and contingency planning fields.



Session 2B

Carbon, the Inflation Reduction Act and the Case for Building Retrofits

Presented by AIA Honolulu

With the building sector the largest contributor of climate-warming carbon emissions, the American Institute of Architects, the Structural Engineers Institute and others have created commitments for building professionals to measure, track, report and reduce carbon with the goal of radically reducing these emissions. In this session, learn about how the Inflation Reduction Act (IRA) 179D tax deduction benefits energy efficiency retrofits and a project's bottom line while facilitating significantly lower embodied and total carbon emissions. Using the 1907 US Post Office in Honolulu as a case study, the presenters will share their experience.

Fenestration Security for Educational, Religious, Commercial, and Retail Applications



Retrofit Security Glazing to Meet Your Needs

- Retrofits into existing door & window frames to keep your facility's refined look
- Crystal clear unbreakable panels allow for uninterrupted sightlines
- Access denial systems available in forced entry and ballistic grade option



RIOT GLASS
AUTHORIZED DEALER

**Active Threat Protection 100x Stronger
Than Window Film**



PANELISTS:

**Lorraine
Minatoishi, Ph.D.,
AIA**

*President & Founder,
AEPAC*



Lorraine
Minatoishi is an

Contact RMA SALES at 808.487.9041 www.rmasalesco.com

Unparalleled Quality & On-Time Delivery

KLOECKNER METALS HAWAII offers our customers the convenience of one-stop shopping for all your steel, metal roofing, and hot-dip galvanizing needs. Our team is excited to partner with you and set your projects up for long-term success.



METAL ROOFING

Trusted, tested, and tough: our high-performance, premium metal roofing systems have a long, successful track record in Hawaii, with many design and color options.



STEEL SERVICE CENTER

We're proud to offer Hawaii's largest inventory of steel products and widest range of services. Our goal is not just to meet your specifications, but to exceed your expectations.



HOT-DIP GALVANIZING

Our hot-dip galvanizing process provides superior long-term protection ideal for Hawaii's demanding environment and will protect your steel for generations.



ADVANCED PROCESSING

Services include saw cutting, plasma cutting, welding, punching, drilling, notching, press braking, coil processing, plate shearing, flame cutting, cut to length, slitting, and CNC sheet metal folding.



SEMINAR GUIDE

architect, entrepreneur and visionary leader who is the president and founder of AEPAC, a Honolulu-based architecture and engineering firm with offices in Guam, California, Texas and other U.S. states. With over 25 years of experience in the industry, Minatoishi has a broad responsibility in creating project portfolios, bringing top-notch engineers and experts in their fields to lead project teams.



Jill Edelman, AIA, LEED BD+C
Founder, DRaGonfly Regenerative Architecture & Design; lecturer, University of Hawai'i School of Architecture

Jill Edelman is an architect and sustainable design advocate with over 20 years of experience and a lecturer at UH-Mānoa's School of Architecture. She is actively involved with the building community to support the state's climate action goals within the realm of architectural design and construction. DRaGonfly Regenerative Architecture & Design is a mission-driven firm dedicated to shifting the practice of architecture to meaningfully address climate change.

Jacob Boles
Doctorate Candidate, University of Hawai'i School of Architecture

Jacob Boles is currently investigating methods of incorporating vernacular building technologies into modern architectural practice to create spaces that are both resilient and responsive to cultural and climatic



needs, including sustainable material development and adaptive reuse of existing structures.



MODERATOR:
Ramona Mullahey
Senior Analyst, Field Policy & Management, HUD Honolulu Field Office
Ramona Mullahey works in the community with

HUD's diverse stakeholders to collaborate and deliver on HUD's Strategic Plan priorities.

Session 2C **Insights Into Honolulu's Rail Transit Project** **Presented by AIA Honolulu**

HART's chief executive provides a behind-the-scenes look at Honolulu's groundbreaking rail transit project. Her presentation will include a discussion of challenges encountered upon joining the project; perspectives on significant technical issues identified late in the game; design elements – both past and future; the current progress of this historic project; and more. Don't miss this opportunity to learn about the project's significance and the ongoing efforts to deliver notable transportation infrastructure in Honolulu.

PRESENTER:
Lori M.K. Kahikina, PE
Executive Director & CEO, Honolulu Authority for Rapid Transportation (HART)

As Executive Director and CEO of HART, Lori Kahikina oversees



the design and construction of the Honolulu Rail Transit Project, the nation's first automated commuter rail system. Previously, she held the position of director of environmental services for the City and County of Honolulu where she managed the city's wastewater and solid waste programs, including a \$5 billion federally mandated consent decree wastewater project.

Session 2D **U.H. School of Architecture: Design for Sea Level Rise** **Presented by AIA Honolulu**

Coastal climate adaptation related to sea level rise is fundamentally reshaping architecture, urban design and landscape architecture education, scholarship, and practice in Hawai'i and beyond. This seminar examines three projects led by faculty members at the University of Hawai'i at Mānoa School of Architecture as part of the university's Community Design Center (UHCDC). These projects include the South Shore Promenade and Open Space Network study; the Ala Wai Small Boat Harbor Vision Plan; and the Charlot House Disaster Plan.

PRESENTERS: **Cathi Ho Schar, FAIA**



Associate Professor, University of Hawai'i-Mānoa School of Architecture, and Director of the University of Hawai'i Community Design Center

Cathi Ho Schar is an associate professor at the University of Hawai'i-Mānoa School of Architecture, and the director of the University of Hawai'i

THE BUILDER'S CHOICE FOR THE ULTIMATE LED DOWNLIGHT



Lighting Designer: EJA, Marin • Photography: Matthew Millman Photography



8LIGHTING.COM

PBX/23 BOOTH #C33P

SEMINAR GUIDE

Community Design Center. Her work engages university, government community and professional partners to address critical built environment issues facing Hawai'i.

Judith Stilgenbauer, ASLA

Professor, University of Hawai'i-Mānoa School of Architecture

Judith Stilgenbauer is a professor at the University of Hawai'i-Mānoa School of Architecture and directs the Master of Landscape Architecture program. Her creative work in teaching and applied research focuses on the role of process, performance and placemaking in ecological urbanism and public open space design across diverse spatial and temporal scales.



Phoebe White, ASLA

Assistant Professor of Landscape Architecture, University of Hawai'i-Mānoa School of Architecture



Phoebe White is an assistant professor of landscape architecture at the University of Hawai'i-Mānoa School of Architecture. Her research considers the conservation, stewardship and representation of cultural landscapes as they adapt to extreme climate events.

'EKOLU (TRACK 3) - CONTRACTING

Session 3A

Cybersecurity: Basics for Design & Construction Business

Presented by BIA Hawaii

In 2021, business-email compromise resulted in a loss of \$2.4 billion, and ransomware complaints accounted for an adjusted loss of more than \$49.2 million, according to the FBI. Cybersecurity is an issue for all businesses regardless of size, with 60% of small companies going out of business after a hack. In this seminar learn the importance of cybersecurity and what resources are needed. It will focus on employee training, including ongoing education and a process for remote workers, and will define phishing, malware, ransomware and business email compromise, with tips to avoid these types of fraud.

PRESENTER: Roseann Freitas

Public Relations & Communications Manager, Better Business Bureau Great West + Pacific

Roseann has over 25 years of experience in public relations, communication, marketing and consumer outreach. In addition, she brings her expertise in understanding small business operations in the home remodeling industry to the BBB. Roseann is a faculty member for Executive Women International's Academy of Leadership and a Voices of the Industry presenter for the National Kitchen and Bath Association.



Session 3B

Pearl Harbor Dry Dock 5: A Mission-Critical Facility for the Navy

Presented by GCA of Hawaii

Meet the primary companies awarded the largest construction contract in NAVFAC history, Dragados/Hawaiian Dredging/Orion Joint Venture (DHO JV). This project will replace Dry Dock 3 at Pearl Harbor Navy Shipyard & Intermediate Maintenance Facility with a new dry dock to serve the Navy's latest fleet of submarines, including permanent auxiliary facilities to assist in servicing the new dock. The PHNSY & IMF requires this dry dock because it will be capable of docking current and future classes of fast-attack submarines to maintain submarine presence in the Pacific.

PANELISTS:

Gerry Majkut

President, Hawaiian Dredging Construction Company

As president of Hawaiian Dredging Construction



Company Inc., Gerry Majkut is responsible for executive leadership of Hawai'i's largest and most diverse, full-service general contractor. He guides Hawaiian Dredging's Hawai'i and Guam operations with over 900 professional staff to provide high-quality construction projects. He has 40 years of construction, engineering and management experience and is dedicated to key core values of health, safety, environmental, customer service and innovation, with a solid commitment to the community.

Martin Lessard
Vice President, DHO JV



Martin Lessard has more than 25 years of experience in the heavy civil construction industry and has overseen the construction of several large, high-profile infrastructure projects in North America. Since joining Dragados in 2016, he has been a key member of the Dragados senior leadership team responsible for leading the bidding teams and assisting with mobilization and construction planning for some of Dragados' largest infrastructure projects in the U.S.



Cedric Ota
Vice President, DHO JV

Cedric Ota is vice president at DHO JV, with over 30 years of experience in construction. He leads the

division in building and refurbishing vital waterfront infrastructure throughout the state, while also expanding the company's expertise in deep foundation work through technology and team capabilities.

CAPT Stephen T. Padhi
Commanding Officer, OICC Pearl Harbor Naval Shipyard

CAPT Padhi graduated from the US

Naval Academy with a Bachelor of Science in ocean engineering and was commissioned into the Civil Engineer Corps. He earned a Master of Science degree in civil engineering from Rutgers University. CAPT Padhi has led a number of major construction programs for the Navy and was instrumental in developing the Shipyard Infrastructure Optimization Program in NAVFAC's first-ever Program Executive Office with PEO Industrial Infrastructure and PMO 555.



"BUILD DIFFERENT, BUILD BETTER, BUILD PONO"

For more than 25 years, Aloha Marketing has worked with Architects, Engineers and Contractors to deliver a wide range of advanced construction materials. We focus on federally funded projects in Hawai'i providing construction materials which include:

**LUMBER,
PLYWOOD,
MILLWORK &
WOOD PANELING**

**BRICK, STONE
& RELATED
CONSTRUCTION
MATERIALS**

**ROOFING,
SIDING &
INSTALLATION
MATERIALS**

**OTHER
CONSTRUCTION
WHOLESALE
MATERIALS**

Through Build Pono we wholesale these products to you the Hawai'i construction industry.

**Visit our booth D13P and learn more about
how we can help you and your company.**



Build Pono LLC

Specialty Material Distribution
+1 808 375-5394 | www.buildpono.com
buildpono@gmail.com



Aloha Marketing
Manufacturers Representatives, LLC

+1 (808) 537-2811 | aloha-marketing.com
paul@aloha-marketing.com

SBE ID: 8860646 | DBE Vendor Number: 21169232

SEMINAR GUIDE



MODERATOR:

Cheryl Walthall
*Executive Director,
General Contractors
Association of
Hawaii*

Cheryl Walthall
is the first female

executive in the GCA's 91-year history. Cheryl joined the GCA in 2019 and is responsible for overseeing all aspects of the organization's operations. Cheryl previously held roles with Pacific Resource Partnership (PRP), which represents the Hawai'i Regional Council of Carpenters and over 240 member contractors, for more than 12 years. During her tenure at PRP, Cheryl was responsible for identifying opportunities for new alliances and developing strategies to expand their member contractors' market reach.

Session 3C

Why Builders and Homeowners Should Choose 3D Blueprints

Presented by BIA Hawaii

Construction is the only industry that does not/cannot test a design before production. 3D Building Information Modeling (BIM) is a tool that generates a digital model to simulate the planning, development and construction of a structure. It allows those who interact with the project more informed planning by providing a better understanding of the physical and functional characteristics of a structure. Learn about the advantages of 3D BIM and benefits gained from using it in your business.

PRESENTER:

Tag Gilkeson
*Owner, Tag &
Associates LLC*

Tag entered the real estate and construction industry in 1999

after obtaining his Texas Realtor license, with a primary focus on investment in real estate. This led to starting a general contracting company and building spec homes. Tag currently owns a design-build firm called Tag & Associates LLC where he works with homeowners, remodelers and builders drawing full construction plans in 3D. He holds an associate degree in architecture and a bachelor's degree in construction management.

Session 3D

Partnering for Revitalization Presented by GCA of Hawaii

NASED - Community Assets Driving Revitalization: Get an intimate perspective on the motivation behind the New Aloha Stadium Entertainment District (NASED) and the key building blocks for NASED's launch into its 30-year mission to grow a thriving TOD community catalyzed by a new sports and entertainment facility.

OCCC - Creating Healing Environments: Based on restorative justice principles and a philosophy of providing healing environments, a new and modern O'ahu Community Correctional Center (OCCC) will rebuild lives and families in our community.



PRESENTERS:

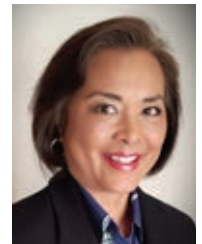
David Harris
*Vice President /
Program Director,
WT Partnership*

David Harris
is assisting the
State of Hawai'i

in the planning, procurement, and delivery of the New Aloha Stadium Entertainment District. He is an experienced project director with a strong skill set across public-private-partnership (P3) projects, project management and procurement, specializing in sports and entertainment assets. Prior to joining the private sector, Mr. Harris worked in the public sector, overseeing the delivery of several billion dollars in sports and entertainment facilities.

Chris Kinimaka
*State Public Works
Administrator,
Department of
Accounting and
General Services
(DAGS)*

Chris Kinimaka has been with DAGS' Public Works Division for the last 23 years. The PWD plans, coordinates, organizes, directs, and controls a statewide centralized Capital Improvement Program of engineering, architectural, and construction services for such key programs and clients as the Aloha Stadium, Department of Public Safety, Department of Health, State Department of Defense, Hawai'i State Judiciary, and the Statewide Anuenue and Hawaiian Microwave Systems, to name a few.





Brennon Morioka, PhD, PE
*Dean, University of Hawai'i-
 Mānoa College of Engineering*

In addition to his responsibilities as dean of the

UH College of Engineering, Dr. Brennon Morioka serves as the chair of the Aloha Stadium Authority. He is the former director for the State of Hawai'i Department of Transportation and the Deputy Executive Director of the Honolulu Authority for Rapid Transportation. He has served in multiple executive positions in Hawai'i's private sector including Hawaiian Electric, CH2M HILL, and Shioi Construction. These positions have provided him with extensive experiences in both the public and private sectors in the engineering and business world.

'EHĀ (TRACK 4) - EXHIBITOR-SPONSORED SEMINARS

Session 4A **High-Performance Firestop** **Sponsored by CEMCO**

In this one-hour course, design professionals will gain knowledge of UL standards for head-of-wall, bottom-of-wall and wall-to-wall assemblies. It will discuss the aesthetic and performance differences between joint treatment types and the components involved with each application, particularly their durability, cost, safety and longevity. The International Building Code that relates to fire-resistant joint systems also will be discussed.

PRESENTER: **Don Pilz**

Research and Development Manager, CEMCO

Don Pilz has invented multiple firestop products distributed in the United States and abroad. He spent 19 years in the Drywall Lathers Union 68L before leaving the trade for the construction defects industry in California. He has spent the last 15 years with CEMCO as a research and development manager. Pilz has authored articles, is a frequent guest speaker at industry events and has written and presented several AIA-accredited courses.



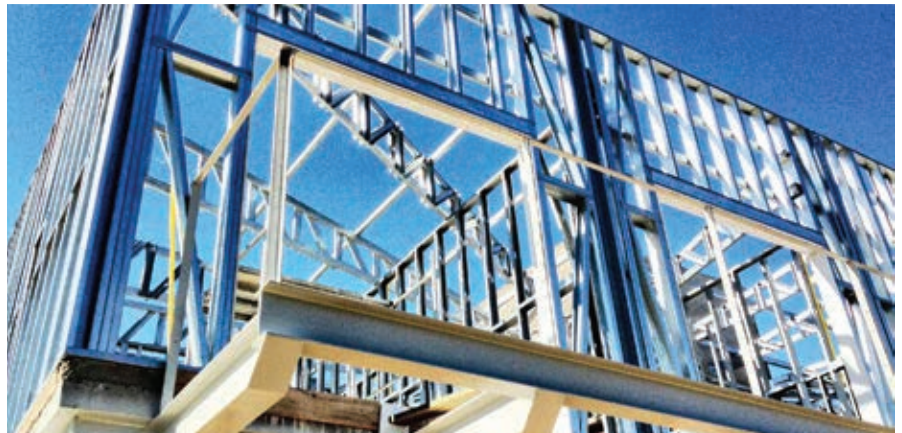
Session 4B **Power of Association: Meet BIA Hawaii and NAHB** **Presented by BIA Hawaii**

Join BIA Hawaii and the National Association of Home Builders for a discussion on the Power of Association in our industry, including hot topics related to our national and local advocacy efforts and what's going on inside DPP.

Session 4C **Selecting the Ideal Pre-Glazed Fenestration System for Your Project**

Sponsored by Hawaii Architectural Sales

This course covers the essential basics of extruded aluminum and glass fenestration systems,



MIDRISE CONSTRUCTION

Pound for pound, no other building material is as cost effective as CFS

- ❖ **CONSISTENT QUALITY**
- ❖ **POINTS FOR GREEN BUILDING**
- ❖ **IMPERVIOUS TO TERMITES**
- ❖ **RESISTANT TO MOLD/MILDEW**
- ❖ **NON-COMBUSTIBLE**

808-485-1400 | HawaiiSteel.com



Hawaii Steel Alliance

SEMINAR GUIDE

emphasizing the differences of pre-glazed unitized fabrication, assembly and installation processes versus on-site glazing and stick assembly. The course also explores the similarities and differences between curtain-wall, window-wall and storefront framing, with discussion including both captured systems and Structural Silicone Glazing (SSG). Glass types and glazing materials will be reviewed in terms of their effect on thermal performance, sustainable design and the well-being, comfort and safety of occupants.



PRESENTER:

David Hewitt

*Vice President of Business Development,
Tecnoglass/ES Windows*

David is an industry veteran with a wide range of experience in sales, marketing, product development, contract glazing and operations in the architectural glazing space. David has

held multiple industry board positions, such as with the National Glass Association (NGA), and was a contributor to the NGA Glazing Manual. He is also a co-holder to patent #6,421,966 "Power Wall."

Session 4D

The Aluminum Advantage in High-Performance Window & Doors

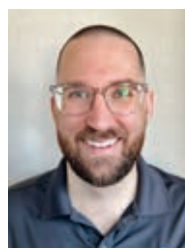
Sponsored by All Weather Architectural Aluminum

Aluminum production has recently reduced its environmental footprint; aluminum window extrusion technology has advanced to make aluminum one of the most sustainable materials and top window performers. This course covers the production developments in the design of aluminum extrusions that, when combined with innovative thermal barrier material, create window and door systems that save energy and improve sustainability. The course concludes with a case study of a high-performance building using high-performance aluminum windows.

PRESENTER:

Josh Middendorp

*Senior Sales Representative Business
Development, All Weather Architectural
Aluminum*



Josh has seven years of experience in the fenestration industry. He has worked for distributors selling windows and doors and most recently

worked for various window manufacturers. He works closely with architects, designers and builders to find the best solutions for their needs. He graduated with a degree in construction management from San Diego Mesa College.

Protect your home.

Because Termimesh is a physical termite barrier made from ultra marine grade stainless steel mesh, no toxic chemicals are pumped in and around your home. So not only is your house safe, the environment is too. No wonder hundreds of thousands of homes and buildings around the world are enjoying the peace of mind provided by the Termimesh System.

Environmentally friendly termite protection.

Termimesh Hawaii LLC

For more information, please visit www.termimeshhawaii.com
or phone (808) 843-1968.



PBX23

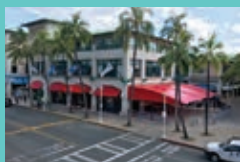
MADE TO ORDER UMBRELLAS

MADE IN HAWAII MADE FOR HAWAII

Tropical J's manufactures wood framed umbrellas to order in our Honolulu factory on Sand Island. With us, you can customize your size, shape, fabric color and other options. We manufacture with a quick turnaround and offer installation and service on everything we sell. We are also introducing a new metal frame umbrella line with customizable Tropical J's umbrella cover. Explore our project galleries at tropicaljs.com.

- **Manufactured for Hawaii's Harsh Environment**
- **Sunbrella 10-Year Warranty Fabric ~100+ Colors**
- **No Permits Required**
- **Sizes: 7' to 14'**
- **Shapes: Octagonal, Square & Rectangular**
- **Tenara Thread Will Not Degrade Due to UV**


TROPICAL J's
INCORPORATED
License # C-23241



Canopies



Furniture



Awnings

1052 Ulupono Street
Honolulu HI 96819
(808) 848-0888

tropicaljs.com

For more information, and quote requests.



Concrete and Masonry

Stronger and lasts longer

**Environmentally Sustainable
Recyclable**

**Lower Maintenance Costs
Longer Life Cycles**



CONCRETE

Build it better



**CEMENT AND CONCRETE
PRODUCTS INDUSTRY OF HAWAII**

808-848-7100 | ccpihawaii.org

Concrete. Resilient. Sustainable.