

OCTOBER 2, 2024
HAWAI'I CONVENTION CENTER

PBX Hi

PRESENTED BY



GENERAL
CONTRACTORS
ASSOCIATION
OF HAWAII

WHERE CONSTRUCTION & DESIGN
PROFESSIONALS GATHER FOR
EDUCATION, PRODUCT KNOWLEDGE,
AND NETWORKING

PROGRAM GUIDE



THE BUILDER'S CHOICE FOR THE ULTIMATE LED DOWNLIGHT



8LIGHTING.COM

PBX/24 BOOTH #E21P

REPRESENTED IN HAWAII BY



CONCRETE: 4 KEY ELEMENTS FOR STRENGTH

Stands the Test of Time

Concrete structures are designed to last for centuries. Unlike other materials, concrete only gets stronger over time.



Simple to Use

If a material isn't easy to use, it doesn't matter how strong it is. Good thing concrete can be molded into any shape, size or design you can imagine.



Peace of Mind

Building with concrete gives you a fire resistant structure. When combined with other fire safety systems, you can exceed building requirements—instead of just meeting them.



Value That Lasts

Concrete won't rot, mold, rust or deteriorate. It's energy efficient and virtually maintenance-free—which means the resources you invest now will last for decades to come.



BUILD WITH STRENGTH

Strength. It's a term that gets used a lot. And while it's one of the most essential components of any building, it's more than the strength itself that's important. It's the **benefits of strength** that make a difference in what you build.

Locally Produced. Readily Available.



CEMENT AND CONCRETE PRODUCTS INDUSTRY OF HAWAII

808-848-7100 | ccpihawaii.org

WELCOME TO PBX Hawai'i

ALOHA

AIA Honolulu, CSI Honolulu Chapter, and the General Contractors Association of Hawaii have teamed up to produce this year's edition of PBX Hawai'i, the state's premier annual trade show for the construction and design industries.

Bringing together the strengths and talents of these three leading organizations, we are excited to welcome Hawai'i's architectural, engineering and construction professionals to the Hawai'i Convention Center on October 2nd for a day of education, product knowledge, and networking opportunities.

You will be pleased to know that PBX 2024 is holding the line on inflation and shrinkflation: The wallet-friendly registration fee remains the same as 2023 and includes the same terrific value for your investment: 16 insightful and timely seminars presented by local and mainland experts; a product showcase of 200+ exhibitor booths; and opportunities to mingle and network with industry peers, including our popular Pau Hana Celebration with tasty pupu, prize drawings, and the 3rd Annual PBX Jeopardy Challenge between industry associations.

We extend sincerest appreciation to our dedicated committee volunteers and consultants and a big "mahalo" to our exhibitors, sponsors, seminar presenters, and many other industry partners who contributed to the success of PBX 2024.

Thank you for joining us on October 2nd. Enjoy the show!



PBX 2024 Management Committee, front row, from left: Cheryl Walthall, Lance Wilhelm, Carol Torigoe. Back row, from left: John Fullmer, Reid Mizue, Julia Fink, Tim Waite

The PBX admission fee includes:

- 200+ vendor booths
- Access to 16 expert-led seminars with AIA LU and HSW credits
- Voucher for Lunch Concession/1801 Café (\$10 value)
- AIA Honolulu 2024 Annual Business Meeting
- Hosted Pau Hana Celebration with great prizes and pupu

A Note About Parking: Other events are taking place at the Hawai'i Convention Center on Oct. 2; onsite parking will be limited.

We encourage attendees to rideshare, bicycle or Biki when possible. Convenient discounted parking for HCC event attendees is available nearby at Ala Moana Center's Premium Parking location P1706. Scan QR code or Text P1706 to 504504. Use Promo Code "HCC22" for 50% discount.



PBX 2024 PLANNING TEAM

Management Committee

AIA Honolulu: Reid Mizue, AIA,
Carol Torigue, AIA, LEED AP BD+C

CSI Honolulu: John Fullmer, AIA (PBX
2024 Vice Chair),

Tim Waite, PE (PBX 2024 Chair)

GCA of Hawaii: Cheryl Walthall,
Lance Wilhelm

Ex officio: Julia Fink, AIA Honolulu

Administration/IT/Website/Graphic Design

Manageability LLC:

Mark Tawara, Joanne Corpuz,
Madisen Oshiro, Tiffany Tabbal

Exhibitors and Sponsors

Barbie Rosario

Seminars

Reid Mizue, AIA (Chair)

Julia Fink

John Fullmer, AIA, CSI

Shae Grimm, AIA

Jennifer Harada Okino, AIA, CDT/CSI

Melanie Islam, AIA, NCARB, LEED AP
BD+C, LFA

David Kaahaaina, AIA, CSI

Kevin Loo-Chan, AIA

Rick Myers, AIA, CSI

Gail Suzuki-Jones, Assoc. AIA

Tim Waite, PE, CSI, CCPR, CDT

Cheryl Walthall

Leighton Wong, PE

Marketing/Communications

Mele Pochereva Public Relations

Pau Hana Celebration/Prizes

Greg Endo

Volunteer Coordinator

Elena Brown, AIA, D.Arch, CDT

PBX Program Guide

Trade Media Hui

Special thanks to the student volunteers from the following clubs:

University of Hawai'i at Mānoa American
Institute of Architecture Students (AIAS)
Hawai'i Chapter

University of Hawai'i American Society of
Civil Engineers (ASCE) Student Chapter

Honolulu Community College
Architectural, Engineering, and CAD
Technologies (AEC) Club

Chaminade University Interior Design
Professional Resource Organization
(IDPRO)



CELEBRATING 10 YEARS OF EMPLOYEE-OWNERSHIP

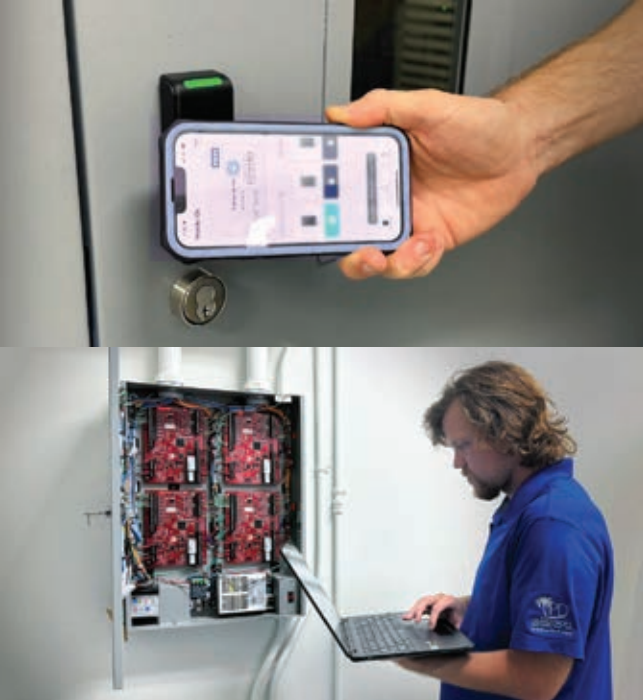


Read about IPD's history, past projects, and manufacturers represented:



www.ipdhawaii.com

HAWAII'S FULL SERVICE ARCHITECTURAL HARDWARE PROVIDER



In addition to providing quality materials, IPD also offers installation for the follow:

- Electronic Access Control
- Hardware
- Elevator Smoke Containment
- Expansion Joint Control Systems
- Hollow Metal, FRP, and Sound Transmission Control Doors and Frames
- Coiling Doors and Grilles
- Commercial Sectional Doors
- Toilet Partitions and Accessories

UPGRADE YOUR SECURITY

With Electronic Access Control

IPD provides full-service solutions for your Access Control needs. From consultation & design, sales & installation, to maintenance & support, we're here to assist.



ASSA ABLOY



Total Door SYSTEMS
Global Leader in Integrated Access Technology™

CORNELL
Commercial Door Solutions

SARGENT



Locally Owned And Operated Since 1978

Our Honolulu facilities include a warehouse, lock shop, and certified weld shop.

Hawaii's Only Certified Architectural Hardware Consultant (AHC)

500 Alakawa St. #114 Honolulu, HI 96817

(808) 955-1126

MAHALO TO OUR SPONSORS & INDUSTRY PARTNERS
(as of August 14, 2024)

PAU HANA RECEPTION CO-HOST & PRIZE SPONSORS



DESSERT STATIONS



MA'O HAU HELE



OHI'A LEHUA



HINAHINA



INDUSTRY PARTNERS

ASCE HAWAII SECTION

HAWAII ARCHITECTURAL FOUNDATION (HAF)

BUILDING INDUSTRY ASSOCIATION
OF HAWAII (BIA HAWAII)

HAWAII ISLAND CONTRACTORS' ASSOCIATION

BUILDING INDUSTRY HAWAII
MAGAZINE

HAWAII SOCIETY FOR
HEALTHCARE ENGINEERING (HISHE)

CONTRACTORS ASSOCIATION
OF KAUA'I (CAK)

NATIONAL ASSOCIATION OF WOMEN IN
CONSTRUCTION (NAWIC)

COOL ROOF RATING COUNCIL (CRRC)

STRUCTURAL ENGINEERS ASSOCIATION
OF HAWAII (SEAOH)

ENGINEERS AND ARCHITECTS
OF HAWAII (EAH)

UNIVERSITY OF HAWAII COLLEGE
OF ENGINEERING

EXHIBITOR LIST (as of August 14, 2024)

Our sponsors are highlighted in **yellow** or **pink** (Dessert Sponsors).

A

- Abodo Wood Ltd..... A11p
- AHT Hawaii B17p, B19p, B21p
- AIA Honolulu.....Z07p
- AL-13 Architectural Systems..... F24p
- Aleo Lighting, Inc..... E22p
- All Green Building Products A14p
- Allana Buick & Bers.....B11p
- Aloha Marketing/
Build Pono C18p, D17p
- ALTRES F46
- Ameristar Perimeter Security..... F25p
- Arcadia Products, LLCB42p
- ARKANCE US CAD..... D22p
- Atlas Sales Co., Inc.B52p
- The Audio Visual
Company F51d, F52p

B

- Bello's MillworkC31
- Benjamin MooreC38
- BIA Hawaii.....
- Breezway North America..... E32p
- Building Envelope Fenestration
Alliance B31p, B33, B35p
- Building Industry
Hawaii magazine

C

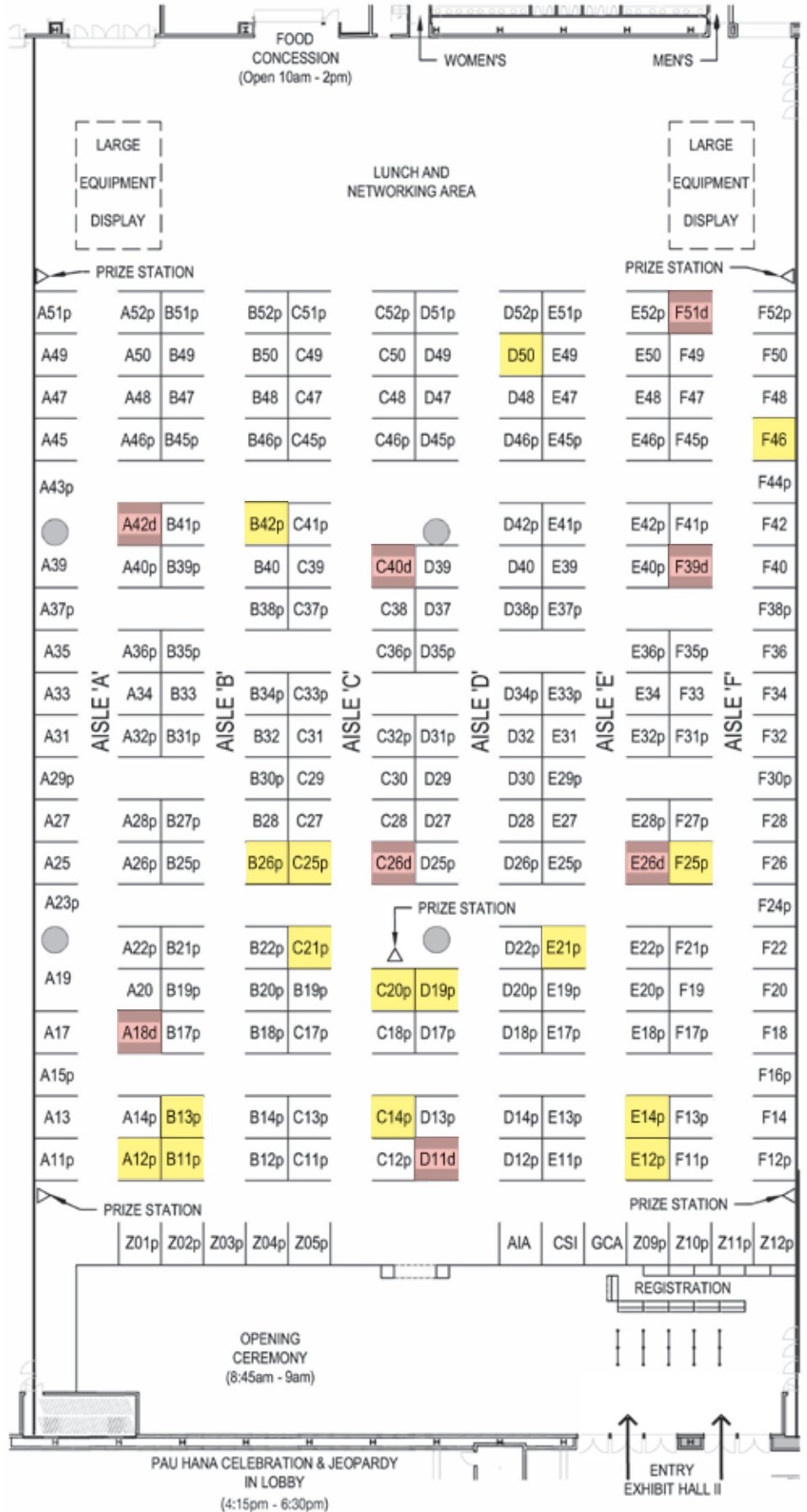
- CCPI HawaiiE48, E51p, E52p
- CEMCO..... F28
- CENSEO AV + Acoustics..... D28
- CENTRIA a Nucor company.....E13p
- Cherry Creek Windows
& Doors..... C21p
- ClarkDietrich D26p
- Cool Roof Rating Council.....
- Cosentino Hawaii..... F12p
- CSI Honolulu.....Z06p

D

- DaltileF21p
- Delco SalesE25p
- The Delivery PeopleA26p, B25p

E

- Ecoshade...D42p, D46p, E41p, E45p
- Engineered Architecturals Ltd..... B40



Hawaii Lighting Representatives

Lighting, Controls, Building Management Solutions

Booth E12/E13



808.445.6466

Prize Contest!

Stop by
Scan Your Badge
Be Entered to Win!

See you on the floor

And be sure to visit our displaying partners :

[✓] MP LIGHTING*

we-ef



aleo[™]
LED LIGHTING

www.hawaiilighting.com

info@hawaiilighting.com



EXHIBITOR LIST (as of August 14, 2024)

engineers and architects
of Hawaii (eaH)
Equipment Oahu LLC E34, E36p
Evergreen by Debra.....F17p, F19

F
FBM Sales/Armstrong Ceilings ... F26
Ferguson ... A40p, A42d, B39p, B41p
Focus Industries F48
Foundation Support
of HIA15p, A17
Foundation Systems Hawaii C32p
Functional Fenestration, Inc.C28

G
GCA of HawaiiZ08p
GHEMCO..... E31
GPRM Prestress..... E49
Grandstone Solid
Surfacing, Inc. D32, D34p
Guardian Glass.....A35

H
Hanwha Vision F11p
Hawaii Architectural Foundation
Hawaii Architectural Sales..... C14p
Hawaii Energy/LEIDOS.....A45
Hawaii Lighting Associates D19p
Hawaii Lighting
Representatives E12p, E14p
Hawaii Stone & Tile Care..... F47
Hewn B20p, B22p
Hicoustix..... B47, B49, B51p
HISHE (Hawaii Society for
Healthcare Engineering).....Z04p
Hollabaugh Brothers
& AssociatesA34

HonblueB26p, C25p
Honsador D45p, D47, D49, D51p
Hope's Windows E40p
HPM Building Supply..... F30p, F32,
F34, F36, F38p, F40

I
Integrated Solutions
TechnologiesA49
Island Cooling.....A19
Island Pacific
Distributors C12p, D11d

J
Jada Windows C33p
James Hardie Building Products.. D25p
Jensen Precast E47
JM Sales HawaiiA47

K
Kapili Solar Roofing & PaintingC20p
Kinetics Noise Control, Inc.C47
Kingspan Insulated Panels,
North AmericaE42p
Kloekner MetalsC39, C41p

L
Laticrete F20
Lightheaded Lighting C52p
Lynden Door, Inc./
Alliance Door Products.... A25, A27

M
Mainline Sales, Inc. D31p
Malarkey Roofing Products.....B50
Mapei F22
Masonry Institute Hawaii E50
Mekala Powdercoat
& Patio Mfg LLC F18
Michels D29
Milliken & Company D30
Mohawk Group D37
MP Lighting.....E11p

N
NAWIC (National Association of
Women in Construction)
No. 8 LightingE21p
NorthClad A43p

O
O'Hagin..... D35p
OK Hardware
& Construction Supply A52p

P
PABCO Gypsum C51p
Pacific Home and
Appliance Distribution D12p
Peterson Sign Company..... E39
Pliteq C17p
Polycoat ProductsA13
Protecto Wrap..... A12p

Q
Quaker Windows & Doors.....C30

R
Raynor Hawaii
Overhead Doors D38p
Reflections Glass.....A48
Renson by Modern
Outdoor Living E26d, E28p
Rinell Wood Systems D48
RMA Sales in HawaiiD18p, E17p

RockfonB45p
Roppe Corp E27

S
SAFTI FIRSTB18p
SEA Imports LLC dba Hawaiian
Discovery Furniture D13p
Servco Forklift & Industrial
Equipment..... Heavy Equipment
Area #1
Sherwin-Williams.....E46p
Sika Corporation C13p
Simpson Strong-Tie D50
Special-Lite.....C27
Statewide General Contracting
& Construction, Inc. B46p, B48
Stego Industries LLC..... D52p
Sto Corp.....E33p
Strategic Building Products
Hawaii, LLC.....B38p, C37p
Structural Systems.....B12p, C11p
Sunbelt RentalsB13p
Sunspear Energy D39

T
T&T Tinting Specialists F14
Talius..... F50
Termimesh Hawaii, Inc. D40
TK Elevator Hawaii..... C36p
Tremco Construction
Products Group D27
Tri-West, Ltd.....C29
Tropical J's..... F31p, F33

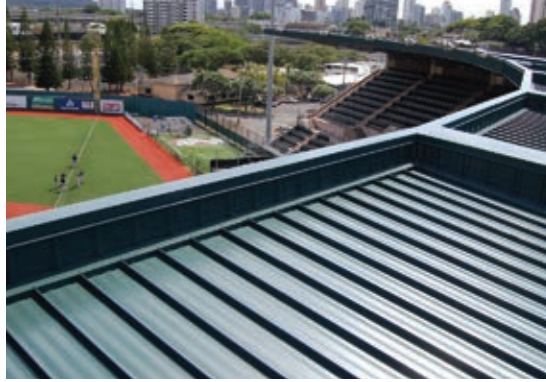
U
Unistrut HawaiiE37p
University of Hawaii College
of Engineering.....

V
Vector Corrosion Technologies ...C48
VELUX North America D20p
Verkada C46p

W
Waltz Engineering..... F27p
WE-EF LightingE18p
Williams Pacific, Inc..... C45p
Winglts D14p
WoodWorks - Wood
Products CouncilC49

Z
The Z Group.....C50
ZurierA39

Exceeding Expectations



Unparalleled Quality & On-Time Delivery

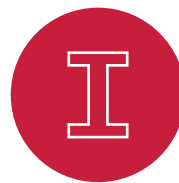
kloeckner metals

KLOECKNER METALS HAWAII has built a reputation for high quality products, reliable on-time delivery, and responsive customer service since 1959. Our team is excited to partner with you and set your projects up for long-term success.



METAL ROOFING

Trusted, tested, and tough: our high-performance, premium metal roofing systems have a long, successful track record in Hawaii, with many design and color options.



STEEL SERVICE CENTER

We're proud to offer Hawaii's largest inventory of steel products and widest range of services. Our goal is not just to meet your specifications, but to exceed your expectations.



HOT-DIP GALVANIZING

Our hot-dip galvanizing process provides superior long-term protection ideal for Hawaii's demanding environment and will protect your steel for generations.



808.353.5360 Hisales@kloekner.com
kloeknermetals.com/hawaii
91-104 Kalaeloa, Kapolei, Hawaii 96707



SEMINAR & EVENTS SCHEDULE

PBX Hawai‘i brings construction and design industries together

Access to these seminars and special events

EXPERT-LED SEMINARS			
TRACK	‘EKAHI — 1	‘ELUA — 2	‘EKOLU — 3
TIME	Design & Practice	Climate Action Planning and Construction	Contracting
7:00 AM	REGISTRATION DESK OPENS		
7:45 AM	Session 1A: KŪLANIHĀKO‘I HIGH SCHOOL: STRIVING FOR NET ZERO ENERGY: AIA HONOLULU AWARD OF EXCELLENCE WINNER! Presented by AIA Honolulu	Session 2A: HAWAI‘I HOUSING DESIGN TOOLKIT Presented by AIA Honolulu	Session 3A: E ‘ŌPŪ ALI‘I - THE HEART OF LEADERSHIP Presented by GCA of Hawaii
8:45 AM	Welcome Remarks, Ho‘okipa Opening Ceremony (Exhibit Hall Lobby) EXHIBIT HALL OPENS		
11:00 AM	Session 1B: REVIVING LAHAINA: HO‘ŌLA LAHAINA PROJECT Presented by AIA Honolulu	Session 2B: NO FEAR OF COMMITMENT: INSIGHTS FROM HAWAI‘I 2030 COMMITMENT SIGNEES Presented by AIA Honolulu	Session 3B: BLUEPRINT READING: JUST THE BASICS Presented by GCA of Hawaii
2:00 PM	Session 1C: NAVFAC’S SHIPYARD INFRASTRUCTURE OPTIMIZATION PROGRAM & USACE’S UPCOMING PROGRAMS Presented by S.A.M.E.	Session 2C: MID-RISE AND BEYOND: INCREASING OPPORTUNITIES WITH WOOD AND TIMBER Presented by AIA Honolulu	Session 3C: GROW YOUR BUSINESS THROUGH CYBERSECURITY MATURITY Presented by GCA of Hawaii
3:15 PM	Session 1D: PUNALU‘U STREAM RESTORATION PROJECT: ACECH ENGINEERING EXCELLENCE AWARD WINNER! Presented by ACECH	Session 2D: BUILDING COMMUNITY IN KAKA‘AKO AND KALAELOA: HCDA’S ZONING UPDATES Presented by AIA Honolulu	Session 3D: BUILDING TOMORROW TOGETHER: EXPLORE THE AIA-ACECH-GCA COMMITTEE Presented by GCA of Hawaii
4:15 PM to 6:30 PM	PAU HANA CELEBRATION, PRIZE GIVEAWAYS, JEOPARDY CHALLENGE (GR) (Enter the prize drawings by visiting the Prize Kiosks in the Exhibit Hall throughou		
4:30 PM	EXHIBIT HALL CLOSES		

together for education, product knowledge, and networking.
 Events is included in the admission fee.

Seminar sessions are subject to change

'EHĀ — 4

**New Products
& Trends**



Session 4A:

**INNOVATIVE FIRE-RELATED
GLAZING TECHNOLOGY**

Sponsored by Safti First

**DON'T MISS THESE
SPECIAL EVENTS**

**WELCOME REMARKS/
HO'OKIPA OPENING
CEREMONY**

8:45 AM - 9:00 AM
EXHIBIT HALL

Join us for welcome remarks and a blessing ceremony prior to the Exhibit Hall opening at 9:00 AM.

Session 4B:

**ACOUSTICAL PERFORMANCE OF
FIRE RATED DEMISING WALLS**

Sponsored by CEMCO

**AIA HONOLULU 2024
ANNUAL BUSINESS MEETING**

9:30 AM - 10:30 AM
LOCATION TBA

Members are invited to attend AIA Honolulu's Annual Business Meeting for chapter updates from our leadership and vote for open Board and State Council positions. The business meeting offers an opportunity for members to engage in dialogue, review the achievements of the past year, and set strategic goals for the year ahead. 10% of the membership must be present to vote; please RSVP on AIA Honolulu's website.

Session 4C:

**BOOSTING CLIMATE RESILIENCE
IN THE ALOHA STATE
WITH COOL SURFACES**

Sponsored by Cool Roof Rating Council

FOOD CONCESSION OPEN

10:00 AM - 2:00 PM
EXHIBIT HALL

Your PBX registration includes a \$10 voucher to use at the Exhibit Hall food concession or the Convention Center's 1801 Cafe.

Session 4D:

TBA

Visit pbxhawaii.com for info

**MEA 'ONO!
DESSERT STATIONS**

2:00 PM - 3:00 PM

Stop by our Dessert Sponsor booths for assorted sweets and a mid-afternoon energy re-charge!

GRAND LOBBY)

throughout the day)

**PAU HANA CELEBRATION!
PRIZE GIVEAWAYS &
JEOPARDY CHALLENGE**

4:15 PM - 6:30 PM
GRAND LOBBY

Pau hana time! Enjoy hosted refreshments, pupu, and prize drawings as you cheer on your favorite team in the 3rd annual PBX Jeopardy Challenge - a fiercely fun competition between industry associations. (Enter the prize drawings by visiting the Prize Kiosks in the Exhibit Hall throughout the day)

LEARN & EARN

16 Sessions | 4 Tracks | AIA LU and HSW CREDITS

Learn from industry leaders and peers and gain inspiration as they share their experience and expertise on topics that are timely and relevant for all segments of the AECO industries.

Most sessions earn 1 AIA LU; many also qualify for HSW credit.

Admission badge is required for entry to seminars. Topics and speakers are subject to change.

'EKAHI (TRACK 1) - DESIGN AND PRACTICE

Session 1A

Kūlanihāko'i High School: Striving for Net Zero Energy: AIA Honolulu Award of Excellence Winner!

Presented by AIA Honolulu

This new DOE campus on Maui showcases the best practices of sustainable design. The project aims to achieve net zero energy by harnessing the natural resources of the site, such as sunlight, wind, and rain. The presentation will cover how the design team explored and applied various passive green strategies throughout the campus, including solar shading, natural ventilation, rainwater harvesting, and native landscaping. The project will serve as a model for future DOE projects in Hawaii and demonstrate how sustainability and good design can go hand-in-hand.

PRESENTERS

**Ryan Sullivan, AIA
LEED AP**

*Associate Principal,
G70*

Ryan focuses on conceptual design and creative thinking. He brings his vision and more than two decades of experience to G70's myriad project types and typologies. Ryan advocates for thoughtful and meaningful design in the built environment to



enrich and inspire the greater community as well as the clients he is fortunate to interact with.



Charles Kaneshiro, AIA, LEED AP

*President and COO,
G70*

Charles specializes in the planning and design of educational and institutional facilities. As one of the first LEED accredited professionals in Hawai'i and 2007-09 Green Schools advocate for the USGBC Hawai'i Chapter, Charles has a passion for designing sustainable buildings that improve the health of occupants and reduce our carbon footprint.

Session 1B

Reviving Lāhainā: Ho'ōla Lāhainā Project

Presented by AIA Honolulu

The mission of the Ho'ōla Lāhainā Project is to provide the community with exceptional designs that are affordable and efficient to build; meet the needs of individual families; and collectively reflect the original charm and character of old Lāhainā town. The project team is also providing pro bono support with building permit application and processing. The discussion will include permitting, residential design considerations and community collaboration, and evolving county and state policies related to the redevelopment of Lāhainā town.

PRESENTER

Atom Kasprzycki, AIA

*Partner / Principal
Architect, Kasprzycki
Designs, Inc.*

Growing up in a family of artists, Atom has been around creation and expression most of his life. Atom started in construction working his way up from the bottom eventually obtaining a general contractors license. He continued his professional development, shifting focus to architecture, apprenticing under mentor architects and structural engineers, eventually becoming a licensed architect.



Session 1C

NAVFAC's Shipyard Infrastructure Optimization Program & USACE's Upcoming Programs

Presented by S.A.M.E.

Presenters will provide an overview of the mission, organization, capabilities, and programs of their respective organizations and also will cover potential upcoming design, construction and engineering opportunities for the AEC industry.



PRESENTERS

CAPT Stephen T. Padhi, PE

*Commanding
Officer, OICC Pearl
Harbor Naval
Shipyard*

CAPT Padhi

served as the Operations Officer for major construction programs at Camp Pendleton and the Naval Surface Warfare Center (NSWC) Philadelphia Division. He was instrumental in developing the Shipyard Infrastructure Optimization Program (SIOP) in NAVFAC's first-ever Program Executive Office with PEO Industrial Infrastructure and PMO 555.

Joanna T.S. Victorino, PE

Director, SIOP Dept. at Pearl Harbor Naval Shipyard



As the first SIOP Department Director for PHNSY, Joanna represents the Program Management Office (PMO) 555 at PHNSY and supports the Shipyard Commanding

Officer for SIOP, which is a holistic program that integrates all infrastructure and industrial equipment investments to meet nuclear fleet maintenance requirements.



LTC Adrian Biggerstaff, PE
Honolulu District Commander, U.S. Army Corps of Engineers

Lieutenant Colonel Adrian Biggerstaff

became the 74th Honolulu District Commander on July 10, 2024. Biggerstaff holds a Bachelor of Science in Civil Engineering from the United States Military Academy, Master of Science degrees in Environmental Engineering (Missouri S&T), Management

Science (Stanford University), and Civil Engineering (Stanford University), and a Ph.D. in Civil Engineering from Stanford University.

Session 1D

Punalu'u Stream Restoration Project: ACECH Engineering Excellence Award Winner!

Presented by ACECH

Punalu'u was once described as a 'place of abundance' and was a thriving agricultural ecosystem. A range of historical impacts over the years led to extensive flooding and neglect of the area, causing great economic hardship. The Punalu'u Stream Restoration Project incorporated Kamehameha Schools' ahupua'a management strategy to provide flood mitigation and restore natural ecological form and process. The project design restored the

HILA HAWAII LIGHTING ASSOCIATES

Hawaii's Full-Service Lighting & Lighting Control Manufacturers' Representative

OUR SERVICES

- Project management
- Local product inventory
- Quick quote desk
- Specification support
- Lighting controls applications support
- On-demand lighting control field service
- Lighting photometric layout services
- Education

FIELD SERVICE LIGHTING CONTROLS

Education and assistance on installing first-in-class lighting controls system.

- Lighting controls take-off
- Site specific wiring controls diagram
- Pre-construction meetings
- Start-up and commissioning
- End-user training
- Lighting controls education

LIGHTING LAYOUTS

Assisting Architects, Lighting Designers and Electrical Engineers with:

- Lighting calculations for normal and path of egress
- Provide 2-D plans and 3-D renderings
- Design build assistance
- Lighting/illuminance heatmaps
- Project ROM and pricing

RENEWABLE ENERGY SOLUTIONS

Offering end-to-end solutions that accelerate the transition to sustainable & renewable energy.

- Project feasibility & proposal
- Specification design
- Financial analysis
- Regulatory compliance
- Energy storage implementation
- System organization
- Project management

Principal Team: Daniel Cortez, Brian Rhea, Dionne Dos Santos

Specialists: Matt Wagoner (Spec. Solutions), Justin Cook (Dist./Contr. Sales)

Visit us at booth #D19P

www.hilightingassociates.com | info@hi-ltg.com | 808-451-3712

natural valley floodplain and terraces, relocated farmers from flood-prone lands to elevated terraces, and reconnected Punalu'u Stream with its floodplain, enhancing the ecosystem's health and resilience and protecting cultural and natural resources.

PRESENTERS
Martin Nakasone, PE

Vice President & Area Manager, AECOM

Martin brings over 30 years of experience in civil engineering that includes roadway, sewer, water, grading and drainage systems, site development, cost assessment, and master planning. As area manager for AECOM Hawai'i-Pacific Islands, he oversees a diverse team that



provides design and engineering solutions for our municipal, federal, and private clients.



Jesse Frey
Senior Capital Program Manager, Kamehameha Schools

Jesse has 20 years of experience in project management, engineering

design, construction management, environmental compliance, and environmental remediation throughout his career. Jesse has managed the execution of a wide portfolio of large-scale, multi-faceted civil and environmental construction projects, most recently the Punalu'u Stream Restoration Project from planning to completion.

REGISTER TODAY FOR PBX 2024!



'ELUA (TRACK 2) - CLIMATE ACTION PLANNING AND CONSTRUCTION

Session 2A

Hawai'i Housing Design Toolkit Presented by AIA Honolulu

The quest for affordable housing has often resulted in overcrowded buildings, the proliferation of units with minimum dimensions, the use of bottom-of-the-line materials, the absence of amenities, and dwelling spaces that are barely adequate. How might we explore alternative processes or hyper-localized approaches in order to achieve more walkable, sustainable, and equitable communities?

This session will present the Holistic Housing Design Toolkit, a collection of tools and resources developed through a bottom-up research collaboration with the Hawai'i Public Housing Authority, aimed at inspiring future designs, informing redevelopment processes, and supporting community engagement activities in the future planning of mixed-income / mixed-finance housing.



HAWAIIAN DISCOVERY FURNITURE
Bringing Aloha Home

Hawaii's Newest Outdoor Living Center



HawaiianDiscovery.com





Premium Teak Furniture
Umbrellas
Outdoor Rugs

Factory Direct Prices
We Ship Anywhere

Visit us in Booth D13p

808-376-0035
Tu-F: 9am-4pm
Sat-Sun: 10am-3pm

PRESENTERS

Karla Sierralta, AIA

Associate Professor,
University of Hawai'i
at Mānoa School of
Architecture



Karla is an associate professor at the School of Architecture at the University of Hawai'i at Mānoa where she serves as the director of undergraduate studies, coordinates the Design Fundamentals Studio, and teaches advanced courses that explore the process and agency of design with a particular focus on cross-cultural narratives, social justice, and dwelling.

Brian Strawn, AIA

Director, Office of Planning and Spatial
Experience, University of Hawai'i

Brian is an architect and design

researcher specializing in human-centered design, systems-based design, and design strategy. He serves as the inaugural director of the Office of Planning and Spatial Experience at the University of Hawai'i, where he leads efforts



centered on imagining the physical and digital realms of the campus of the future.

Session 2B

No Fear of Commitment: Insights from Hawai'i 2030 Commitment Signees

Presented by AIA Honolulu

With the building sector standing out as the largest single contributor to climate change, the AIA 2030

Commitment is a tool for change. As a catalyst for climate action, the Commitment equips architecture firms with measurable decarbonization targets and tracking tools to achieve portfolio-wide carbon neutrality by 2030. Representatives from Honolulu firms at different stages of implementing the Commitment will share their lived experiences, challenges, and how the Commitment has transformed their approach to architectural design and climate change in Hawai'i.

PRESENTERS

Jill Edelman, AIA, LEED BD+C

Founder, DRaGonfly
Regenerative
Architecture &
Design



Jill Edelman is an architect and regenerative



Trenchless Solutions Built with Trust

From energy delivery systems to water and wastewater pipelines to offshore wind construction, Michels designs and builds infrastructure solutions to deliver critical services to Hawai'i and the Asia Pacific region.



MICHELS®

WE DO THAT ... & MORE

www.Michels.us

EOE/AA/M/F/D/V

SEMINAR GUIDE

development practitioner with over 20 years of experience. DRaGonfly Regenerative Architecture & Design is a mission-driven firm dedicated to shifting the practice of architecture to meaningfully address climate change through regenerative design.



Melanie Islam,
AIA, NCARB,
LEED AP BD+C,
LFA

*Principal &
Sustainability
Director, Mason*

Ms. Islam is a Principal and Sustainability Director at MASON. She is driven to work on projects that improve communities and thrives on opportunities that guide smart choices in developing

climate-responsive buildings that adapt to evolving climatic conditions while working to draw down both operational and embodied carbon emissions.

Matt Loudermilk,
Assoc. AIA
Designer, AHL

Matt is a systems-thinking designer seeking to mend the inherited oppositions within our natural and urban environment. Since joining AHL, Matt has supported the Commitment through data documentation, performance communication, and project team design data literacy to more effectively consider energy in decision-making.



Jay Moorman,
AIA, NCARB
*Lead Sustainability
Coordinator, KYA Inc.*

Jay manages KYA's adoption of the AIA 2030 Commitment and developed KYA's

Sustainability Action Plan. As lead sustainability coordinator, he conducts research, provides education, and facilitates the implementation of sustainable design strategies with an emphasis on resiliency.

EST. 1970
THE AUDIO VISUAL COMPANY
A DIVISION OF WWI

Beautiful AV solutions created just for you.

We're here to help you achieve your vision of spectacular AV design.

Enterprise • Education • Hospitality • Healthcare • Military/C2 • House of Worship

www.theavco.com | 808-485-3200

BEFORE

AFTER

BOOTHS B46P, B46P, B47 & B49

STATEWIDE GC & CONSTRUCTION IS THE EXCLUSIVE CONTRACTOR FOR NUWALLS HAWAII. A STRETCH FABRIC SOLUTION TO IMPROVE YOUR ROOM'S APPEARANCE AND ACOUSTICS.

NUWALLS HAWAII IS A SOLUTION TO UNSIGHTLY AND ASBESTOS-CONTAINING POPCORN TEXTURED CEILINGS. HAVE A SMOOTH LOOKING CEILING THAT IS CLEANABLE. COMES IN MANY COLORS AND YOU CAN PRINT OR PAINT IT.

10-YEAR WARRANTY

STATEWIDEHAWAII.COM
808-689-4115 INFO@SGCCHAWAII.COM

**Scott
Schwarzwalder,
AIA, LEED AP
BD+C**

*Associate / Project
Architect, G70*

Scott recently led G70's successful adoption and ongoing implementation of the AIA 2030 Commitment, including development of the firm's Sustainability Action Plan and project reporting workflow. He is currently chair of the AIA Honolulu COTE and a stalwart advocate for green building.



Session 2C

**Mid-Rise and Beyond:
Increasing Opportunities with
Wood and Timber**

Presented by AIA Honolulu

The expanding use of wood-frame construction for mid-rise projects is allowing architects to creatively achieve multiple, simultaneous objectives, with a significant increase in the use of off-site construction methods for wood-frame multifamily and commercial buildings. Wood buildings of five, six and more stories are rising among traditional concrete and steel shells as designers and developers embrace both wood and mass timber's vast potential for faster installation, and a significantly lighter carbon footprint. This session will illustrate code-compliant opportunities and trends in low- to mid-rise wood-frame construction.



**PRESENTER
Kate Carrigg, PE**

*WoodWorks
Regional Director -
HI, OR, ID-South*

Kate provides education and assistance toward the use of wood

and mass timber in commercial and multifamily construction. With backgrounds in structural engineering and construction management, she brings a unique perspective to

projects she assists with. Kate has extensive experience with a multitude of successful projects ranging from commercial mass timber to multifamily light-frame podium.

Session 2D

**Building Community in
Kaka'ako and Kalaeloa: HCDA's
Zoning Updates**

Presented by AIA Honolulu

The Hawai'i Community Development Authority (HCDA) is implementing new rules in Kalaeloa and Kaka'ako that will promote healthier, safer, and more sustainable and equitable communities. The new rules will streamline and speed up many types of zoning reviews while creating more regulatory consistency across HCDA's districts. The new

rules will also introduce a requirement to consider climate change and sea-level rise that will improve resiliency and community welfare.

PRESENTER

Ryan Tam

*Director of Planning
and Development,
Hawai'i Community
Development
Authority*



Ryan oversees zoning and supports transit-oriented development infrastructure planning efforts at Hawai'i Community Development Authority. Ryan was previously the director of planning at the Honolulu Authority for Rapid Transportation.

STEEL FRAMING WON'T FEED A FIRE

Fast Facts:

- Steel is a non-combustible, fire resistant material and will not feed a fire.
- Building with steel can reduce cost of construction insurance as well as homeowners insurance premiums.
- On average, wood framing ranks third as the first-ignited material in home fires (*National Fire Protection Association*).
- A complete list of cold-formed steel floor, wall, and roof fire rated assemblies is available from the Steel Framing Alliance (www.steel framing.com)

**Hawaii
Steel
Alliance**

HawaiiSteel.com

'EKOLU (TRACK 3) - CONTRACTING

Session 3A

E 'Ōpū Ali'i - The Heart of Leadership

Presented by GCA of Hawaii

In ancient Hawai'i the ruling class, or ali'i, had jurisdiction over small segments of land, a whole island, or the entire Hawaiian archipelago. The lessons passed down through stories of their lives and reigns serve to inform and inspire Hawai'i's leaders today. "E 'Ōpū Ali'i" is an 'olelo no'ea, or wise saying that makes reference to the heart of an ali'i. This short phrase encourages those to whom it is spoken to adopt the heart and soul of our ancient rulers and apply them to the most pressing leadership challenges we face today.



PRESENTER

Lance Wilhelm
President, The Wilhelm Group

Lance's construction experience began in 1989 and he has held virtually every line

responsibility within the industry. Before establishing his own consulting and management firm, Lance most recently was managing principal for Irongate. Lance and his TWG team are involved in a wide variety of projects in both the public and private sectors, in engagements that range from early-stage development to construction management.

Session 3B

Blueprint Reading - Just the Basics

Presented by GCA of Hawaii

Do you find a set of plans that is 500 - 1000 pages overwhelming? This brief overview of blueprint reading may help and will include just the basics: types of drawings, design disciplines, scales used on drawings,

drawing sizes, interpreting various symbols and notations, navigation through drawings, and more.

PRESENTER

Colleen Furuya
Project Engineer, Mass. Electric Construction Co.

Colleen has worked for over 40 years in Hawai'i and on the mainland for subcontractors and general contractors. She has been with Kiewit / Mass. Electric for 25 years. Over the years, Colleen has done shop drawings, project engineering, and project management duties.



Session 3C

Grow your Business through Cybersecurity Maturity

Presented by GCA of Hawaii

Hawai'i's general contractors, the trades, architects and others must comply with cybersecurity requirements to secure federal projects to grow and diversify their businesses. Yet many small and midsize businesses struggle with being able to demonstrate compliance, which disqualifies them from doing business with the military. With an estimated \$1.55 billion in military construction allocated for Hawai'i in FY 2025, the most of any state, Hawai'i companies must be prepared to meet these new cybersecurity requirements. This presentation will focus on the requirements for CMMC compliance and resources that are available to help Hawai'i businesses.



PRESENTER

Al Ogata
President & CEO, CyberHawaii

CyberHawaii is a local nonprofit organization that helps small and midsize

businesses and consumers build

resiliency against cyber threats. Under Al's leadership, CyberHawaii collaborates with state and federal government agencies, including the Cybersecurity and Infrastructure Security Agency (CISA) and the FBI to deliver timely, practical solutions to protect against cyberattacks and mitigate their impact.

Session 3D

Building Tomorrow Together: Explore the AIA-ACECH-GCA Committee

Presented by GCA of Hawaii

Join this exciting and informative session to learn about the AIA-ACECH-GCA Committee, a dynamic collaboration between the American Institute of Architects Honolulu Chapter (AIA), the American Council of Engineering Companies of Hawaii (ACECH), and the General Contractors Association of Hawaii (GCA). Discover how these leading associations work together to advance the built environment, promote professional excellence, and address key industry challenges. We will delve into the committee's priorities, current initiatives, and the significant impact you can make by getting involved.

PRESENTERS

Eddie Ebert, AIA NCARB LEED AP
Principal Architect & Team Leader, RIM | A GHD Company

At RIM | A GHD Company, Eddie Ebert leads the

Hawai'i office of 20 people, including seven licensed architects. With 26 years of experience, including 22 in Hawai'i, Eddie specializes in comprehensive architecture, sustainable design, and branding services. Eddie is an active member of AIA Honolulu as a past board member and current AIA/ACECH/GCA Committee chair.





Kyle Kaneshiro, PE
Principal, The Limtiaco Consulting Group

Kyle Kaneshiro is a Principal at The Limtiaco Consulting Group

and helps to lead their design and construction management divisions. With over 29 years of civil and sanitary engineering experience, Kyle specializes in site development and wastewater facilities design. Kyle is the immediate past president of the American Council for Engineering Companies Hawai'i (ACECH) and an AIA/ACECH/GCA Committee Co-Chair.

Heather de la Garza

Preconstruction Manager, Albert C. Kobayashi, Inc.



As the preconstruction manager at ACK, Heather is responsible for overseeing the estimating department and ensuring that project planning and budgeting run smoothly. With a knack for a collaborative style, Heather works with everyone involved to hit project goals and deliver great results.

Heather is a co-chair of the AIA/ACECH/GCA Committee.

'EHĀ (TRACK 4) - NEW PRODUCTS & TRENDS

Session 4A

Innovative Fire-Rated Glazing Technology

Sponsored by Safti First

Architects have always pushed the limits of what building products can do, and fire-rated glazing is no exception. This program shows how fire-rated glazing has evolved from small door lites and openings using wired glass and ceramics to floor-to-ceiling and wall-to-wall, multi-tasking fire resistive glazing

systems. Case studies showing these innovative design applications in real-world settings will be used to show participants how architects continue to push the boundaries of what fire-rated glass can do.



PRESENTER
Michelle Murray
Architectural Sales Representative, Safti First

Michelle Murray is a dynamic presenter who has over 15 years

of experience in the architectural glazing industry. She brings her extensive knowledge and expertise of fire-rated glazing systems and fenestration in general when working closely with architects, specifiers, glazing contractors and code officials.

Session 4B

Acoustical Performance of Fire Rated Demising Walls

Sponsored by CEMCO

The next wave of construction defect claims is here, and it's making quite a splash. Unlike construction defects that focus on mold and water infiltration caused by heavy rain and/or faulty construction, sound defects can happen daily. The current specified STC rating listed in the building codes still may not be good enough as most people are easily annoyed by loud neighbors. As a contractor/architect/developer, how can you protect yourself against potential claims related to STC values? This seminar will cover what goes into an ASTM E-90 sound test, what types of materials improve or decrease STC values, how underperforming

VOTED HAWAII'S #1 DESTINATION FOR HOME APPLIANCES



HOME APPLIANCES • OUTDOOR KITCHENS • COMMERCIAL & RESIDENTIAL PROJECTS

With over 200 years of combined experience, our product experts and project managers are ready to guide your project of any size to success. Visit our beautiful showroom to select the right appliances, and rely on our expansive warehouse and logistics team to ensure timely availability of your products. Contact us today.



Please Call: **(808) 564-2493**
Showroom: **99-1305 Koaha Place Aiea, HI 96701**
Website: **www.PacificHomeandAppliance.com**

Visit our showroom or connect with us today!

walls can impact defect claims, fire-rated wall testing versus sound wall testing, third-party sound reports, and more.

PRESENTER

Don Pilz

Research and Development Manager, CEMCO

Don Pilz has invented multiple fire-stop products distributed in the U.S. and abroad. He has spent the last 15 years with CEMCO as a Research and Development Manager. Pilz has authored articles in *Walls & Ceilings* magazine, is a frequent guest speaker for numerous industry events, and has written and presented several AIA-accredited courses.



Session 4C

Boosting Climate Resilience in the Aloha State with Cool Surfaces

Sponsored by Cool Roof Rating Council

Hawai'i is a leader in passive cooling and climate resilience as the first in the nation to adopt cool surfaces (cool roofs and cool exterior walls) into the statewide energy code. Attend this seminar to hear how cool

surfaces reduce energy use, produce cost savings, improve occupant comfort, combat the impacts of urban heat islands and extreme heat, and increase resilience and equity. Learn about Honolulu's updated cool surface code requirements, as well as LEED and Green Globes credits for heat island reduction; how to identify compliant products using a free, online resource; and gain access to tools for quantifying cool surface energy and cost savings.



PRESENTER

Sarah Yuko Schneider

Deputy Director, Cool Roof Rating Council

The Cool Roof Rating Council is a non-profit organization formed in 1998 to develop accurate and credible methods for evaluating and labeling the radiative properties of roofing and exterior wall products. Sarah has over

17 years of experience in the energy efficiency and sustainability sectors and oversees the organization's policy and standards development, various accreditations, code advocacy, and outreach and education activities in the U.S. and internationally.

Session 4D

To be announced. Info at pbhawaii.com.

Hawaii's **Safest** and **Strongest** Louver Window

IS YOUR HOME
Safe
and
Secure?

Tempered Glass

The pin secures the blade to the clip from inside.

Don't try this at home!

STRONGHOLD™
by breezway

Please visit www.breezway.com or call 484 5999

PBX Hi





We Keep Great Company

Construction continues to be a vibrant pillar in Hawaii's economy, thanks to organizations that believe in quality workmanship. As Hawaii's premier construction industry association representing close to 500 general contractors and other construction-related firms, the General Contractors Association of Hawaii is proud that our members play a vital role in building the presence and resilience of our state's great companies!



Photo courtesy of GCA member Nordic PCL Construction, Inc.

What are the advantages of being a GCA member?

Scan the QR code or visit:

www.gcahawaii.org/member-services



**GENERAL CONTRACTORS
ASSOCIATION OF HAWAII**

Quality People. Quality Projects.

CT Shaft Wall Stud System by CEMCO®



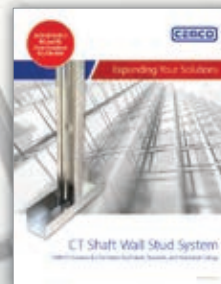
2021/2018/2015
IBC and IRC
Code Compliant
ICC-ESR 4934

Cost-Effective Solution for Shaft Walls, Stairwells, and Horizontal Plenums

- » Manufactured from hot-dipped galvanized steel with a standard G40 coating in 18 and 20 gauge, CEMCO's CT Studs combined with standard CEMCO J-Tracks are a cost-effective solution for shaft walls, stairwells, and horizontal plenums that require a minimum 1-hour fire rating.
- » Approved with multiple gypsum board and liner manufacturers in many 1 and 2-hour UL Listed fire-rated shaft wall assemblies, making it one of the most flexible shaft wall systems in the Industry.
- » Sizes include 2-1/2" (20 ga.), 4" and 6" (20 and 18 ga.).
- » Contact your CEMCO sales professional today for more information!

← CT Shaft Wall Stud

← Corresponding J-Track



VIEW THE CT SHAFT WALL SYSTEM STUD CATALOG!



Expanding Your Solutions

www.cemcosteel.com | 800.775.2362